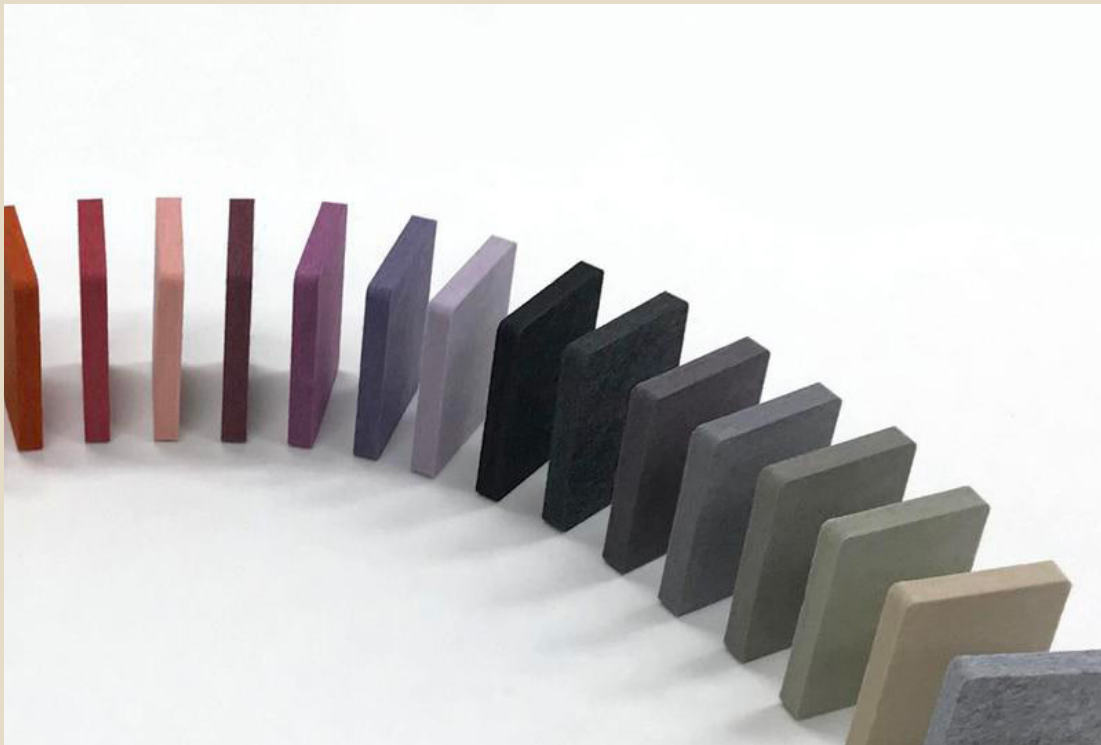


burgtec.



House Acoustics

In collaboration



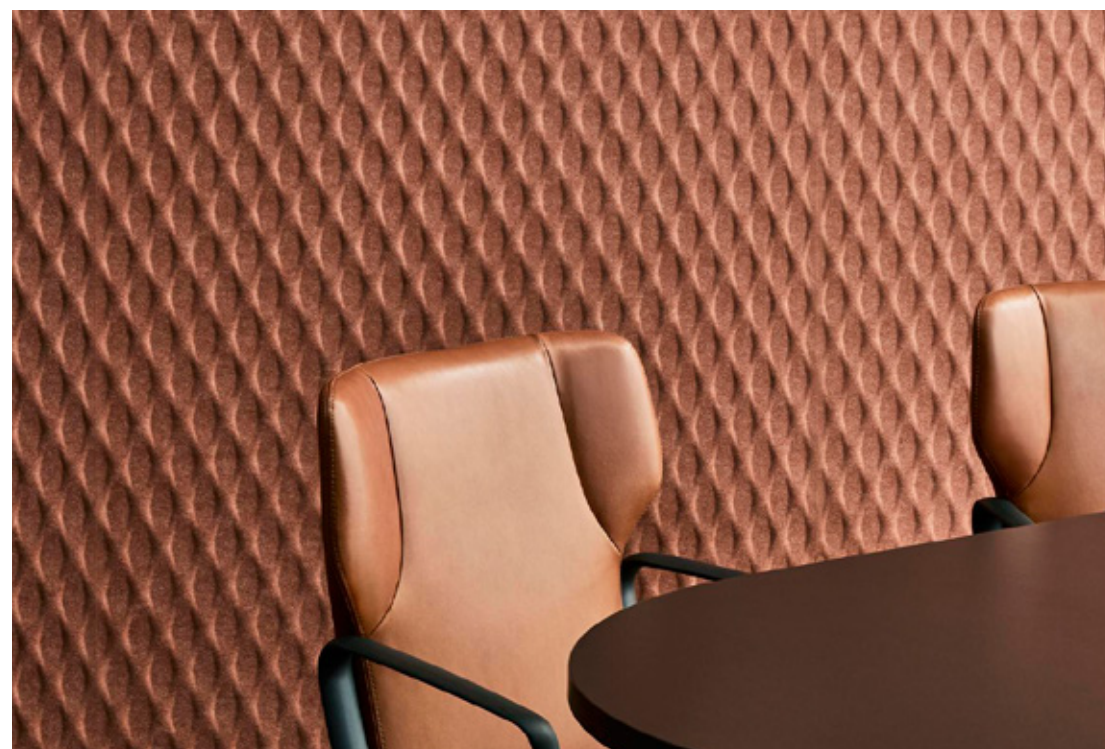
Established in 1987, Woven Image is an international interior finishes company with sustainability and design leadership at its core. From humble beginnings in Sydney, there are now Woven Image offices all throughout Australia, Asia and a network of distributors covering UK & Europe, North America and Indo-Pacific regions.

Specialists in acoustic products, Woven Image continually nurtures its unique commitment to collaborate with local artists, developing a rich and ever-growing portfolio of Australian designs. Not only made with dematerialisation and upcycling front of mind, all Woven Image products utilise recycled or waste base materials, and printed designs use non-toxic inks with low VOC's.

Burgtec and Woven Image have been brought together through a shared devotion to environmental responsibility, partner diversity and product transparency. With benefits to every aspect of commercial workplaces, our partnership unites Australia's best acoustic material with the best workstation partitioning range on the market.

Stronger together, our goal as product partners is to lead our respective markets into a sustainable, inventive future that exceeds creative expectations, thinking beyond current trends to bring the best screening solutions to the world of workplace design.

| | | |
|------------|---------------------------|---------|
| CATEGORY A | Aura Panel | Page 8 |
| CATEGORY B | EchoPanel® 12mm | Page 10 |
| CATEGORY C | EchoPanel® 12mm – Premium | Page 12 |



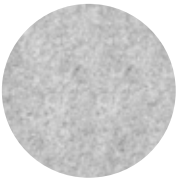
CATEGORY A

Aura Panel

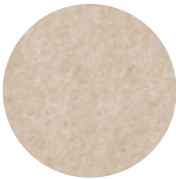
As the stocked category of the three most popular colours, choosing Aura Panel means guaranteed availability and the shortest lead-time.

| | |
|--------------|---------------------|
| Application: | Workstation Screens |
| Composition: | 100% PET |
| Thickness: | 18mm & 27mm |

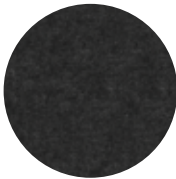
Panel may vary in colour due to the nature of the media



Light Grey



Natural



Charcoal

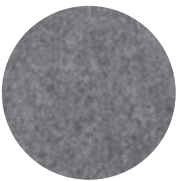
CATEGORY B

EchoPanel® 12mm

Covering a soft, muted palette, this EchoPanel® range offers contemporary class for the workstations of todays office.

| | |
|---|--|
| Application: | Workstation Screens |
| Composition: | 100% PET (60% post-consumer recycled) |
| Thickness: | 12mm |
| Fire Test: | AS 1530.3 ISO 9705: Group 1 GB 8624 B1 BS EN 13501.1: Classification B - s1, d0 |
| Sound Absorption: | AS ISO 354: 2006 (R2016) |
| Global GreenTagTM GreenRATE Level A Certified | |

Panel may vary in colour due to the nature of the media



442 Grey



500 Off White



542 Black



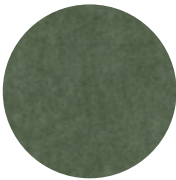
550 Onyx



101 Frost



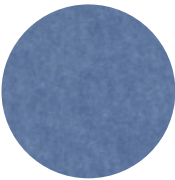
633 Pacific



349 Vineyard



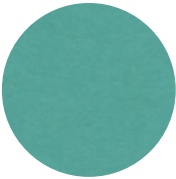
384 Olive



660 Coronet



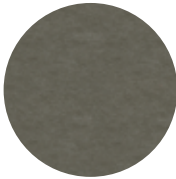
276 Lavender



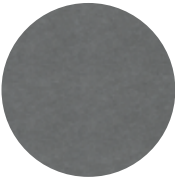
325 Viridian
Green



338 Jade



402 Pebble



444 Smoke



454 Mushroom



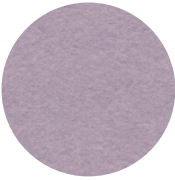
468 Vanilla



487 Blush



908 Cream



274 Orchid

CATEGORY C

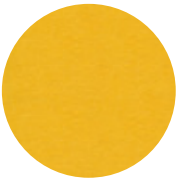
EchoPanel® 12mm

– Premium

Bold and bright, the EchoPanel® Premium colours for acoustic workstation screens bring character and life to the workplace.

| | |
|---|--|
| Application: | Workstation Screens |
| Composition: | 100% PET (60% post-consumer recycled) |
| Thickness: | 12mm |
| Fire Test: | AS 1530.3 ISO 9705: Group 1 GB 8624 B1 BS EN 13501.1: Classification B - s1, d0 |
| Sound Absorption: | AS ISO 354: 2006 (R2016) |
| Global GreenTagTM GreenRATE Level A Certified | |

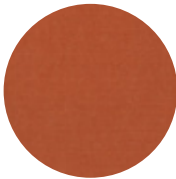
Panel may vary in colour due to the nature of the media



108 Sunshine



124 Ochre



295 Mandarin



381 Lime Splice



551 Blue



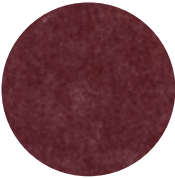
579 Pistachio



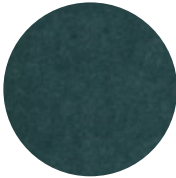
580 Sage



193 Rouge



269 Wine



330 Ivy



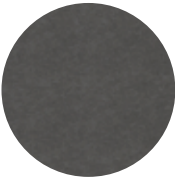
365 Navy



576 Magenta



167 Cinnamon



447 Slate





People are the heart of every organisation. A well-designed workplace is one that welcomes, supports and elevates. It inspires people to bring their best self to work, everyday.

At Burgtec, we're genuine about partnerships. Bringing our expertise to the table, we listen with intent to understand the individual needs of our clients. We're proud to provide service as it should be, never taking our supplier, peer or client relationships for granted. Since 1981, we've been local first. We design and manufacture our furniture here in Australia, using locally produced materials and suppliers at every step possible. We do this because it just makes sense – quicker lead times, true sustainability, better control of budgets and never needing to compromise on quality. A Burgtec workplace balances practical needs with good design and ingenuity. It's a space that sits right, a place that nurtures relationships and potential.



Canberra
Sydney
Melbourne
Brisbane
Newcastle
Perth
Central Coast

