

burgtec.



Well-designed solutions to elevate
and support your people.



People are the heart of every organisation. A well-designed workplace is one that welcomes, supports and elevates. It inspires people to bring their best self to work, everyday.

At Burgtec, we're genuine about partnerships. Bringing our expertise to the table, we listen with intent to understand the individual needs of our clients. We're proud to provide service as it should be, never taking our supplier, peer or client relationships for granted.

Since 1981, we've been local first. We design and manufacture our furniture here in Australia, using locally produced materials and suppliers at every step possible. We do this because it just makes sense – quicker lead times, true sustainability, better control of budgets and never needing to compromise on quality.

A Burgtec workplace balances practical needs with good design and ingenuity. It's a space that sits right, a place that nurtures relationships and potential.

Last year was enigmatic, to say the least. But together with our clients, we created some incredible spaces and pioneered some cutting-edge product.

Take a quick look back at 2021.



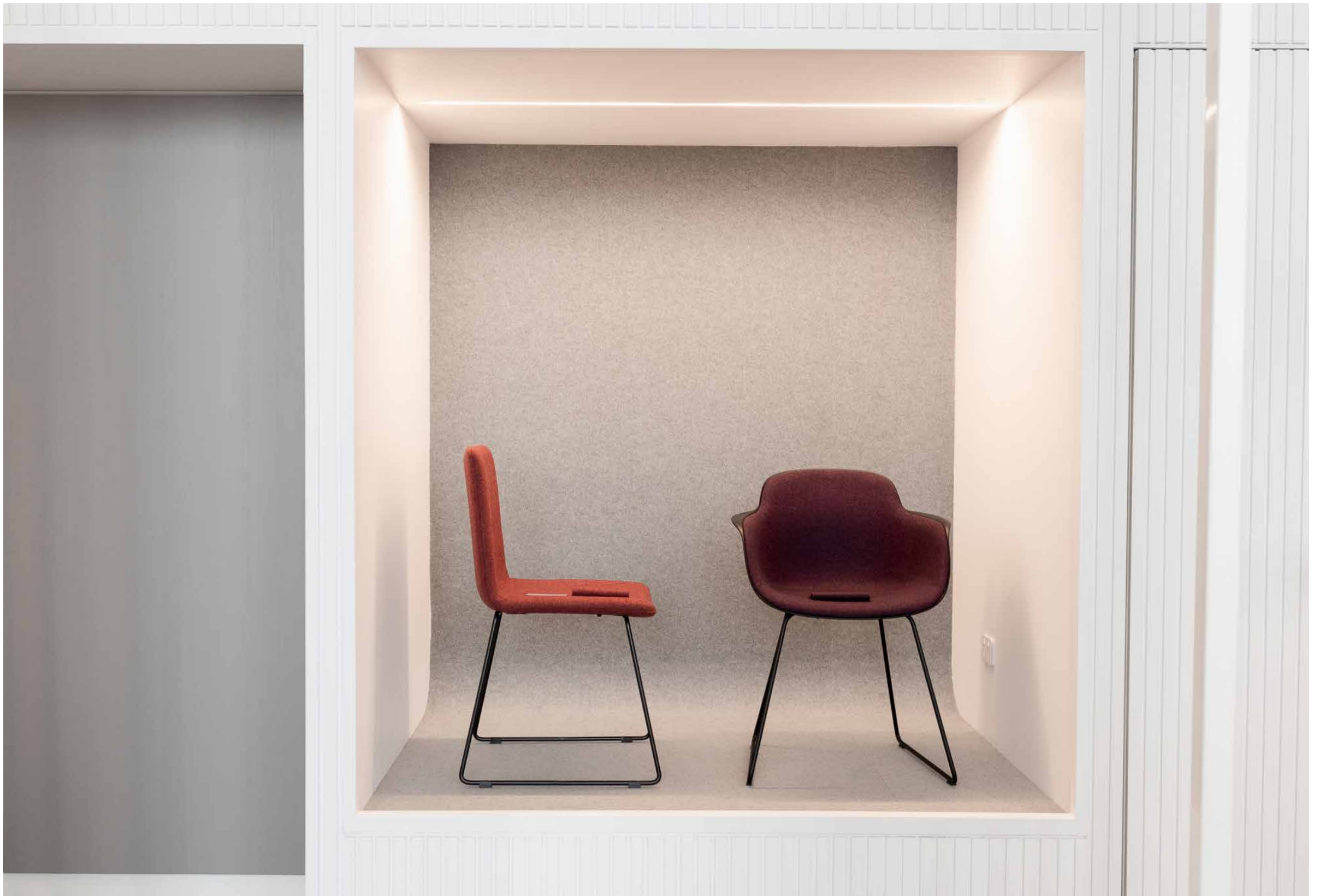
CANBERRA SHOWROOM

The new Canberra showroom is a key milestone in the Burgtec story, bringing to life an aspirational vision for the ACT market which has taken several years to realise.

We see this space providing a unique opportunity for the different facets of commercial projects coming together - planning, design, delivery and product elements - to collaborate and create synergies which deliver better value for end clients.

Time will tell, but it's been great creating a welcoming meeting place in the heart of Canberra, which can be taken advantage of in many different ways. We hope you are as pleased with the space as we are!







DESIGN SUITE

You design it, we make it. DesignSuite brings your ideas to life with endless possibilities at your fingertips. Build custom workstation, seating, and storage configurations with custom sizes and materials from our unmatched, categorised range. DesignSuite delivers everything you need to specify furniture, with real-time pricing, lead-times, and all the file downloads you need.



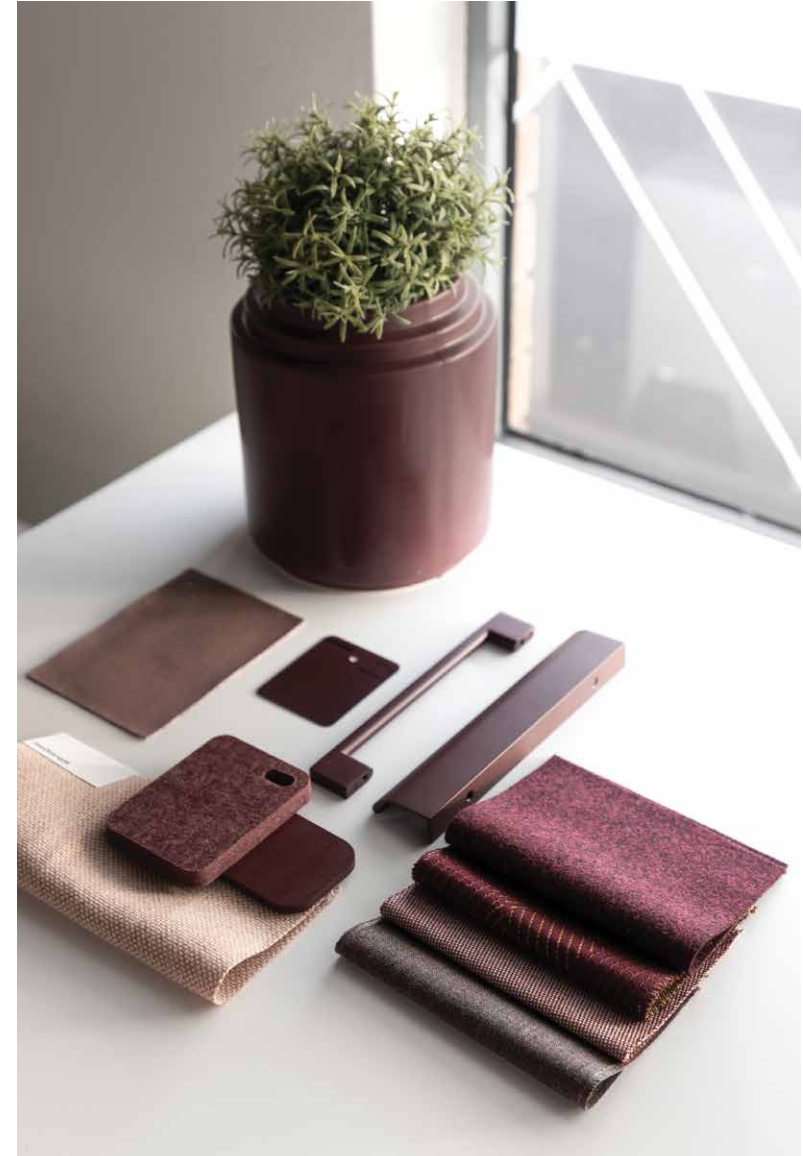
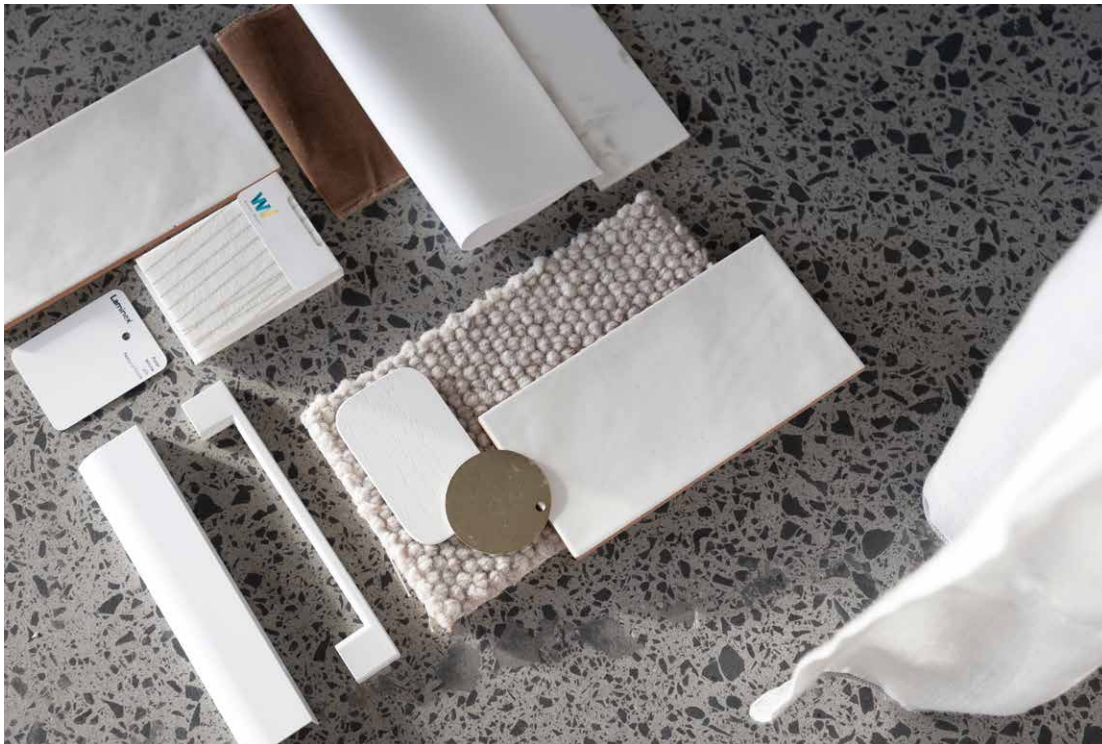
“Possibly the biggest step forward our industry has seen in the last 20 years, in terms of simplifying furniture specification. DesignSuite is already saving substantial time for my team, as well as enhancing the specification in our projects.”

Associate Director, Top-Tier Architecture Firm

CURATED PALETTE

In an industry-first compilation, we have curated a contemporary palette that brings textiles, laminates, metal coatings & timber stains together, to remove the ambiguity from workplace design.

Creating coordinated spaces with complementary fitments is no longer a 'custom' exercise. This range embraces the finest hues of the current design era, so that desking, seating, storage, and accessories can be confidently colour-matched.



Laminex

Green
Slate
8793
Natural Finish

kvadrat maharam



The longstanding partnership of Denmark-based Kvadrat and US-based Maharam is founded on a shared philosophy of design innovation and service excellence. A dedication to furthering contemporary visual culture, a commitment to the environment, and a rich history of family ownership has strengthened this bond since 2001. Leaders in their respective markets, Kvadrat and Maharam's combined product offering represents the largest range of textiles available worldwide.

Burgtec has formed a mutually-beneficial alliance with Kvadrat Maharam, to bring together a curated palette of textile finishes that meet the current market requirements.

By providing a selection of clearly defined, accurately priced, on-trend finishes, this brand partnership adds further value to our clients; providing specifiers with the confidence that design integrity will be maintained, as well as giving certainty around pricing - from initial specification right through to project delivery.

As a leading Australian manufacturer sharing the commitment to family ownership, quality design and consistent quality, Burgtec is proud to collaborate with a true market leader in commercial textiles. This partnership will continue to grow and evolve, as we work together to produce world class, Australian-made upholstery solutions for large-scale commercial fitouts across all sectors of the market.

Corium Leather was born from a desire to restore passion and respect-for-craft in the Australian Leather industry. With over 50 years' experience, and exceeding traditional standards and environmental values, Corium are a trusted supplier internationally for designers and furniture makers.

Corium represents several leading tanneries from across Germany and Europe, including a 'World Tannery of the Year' and 'World Leather of the Year' award-recipient for their progressive techniques using olive leaf and other natural tanning agents.

Sharing German-heritage, Burgtec and Corium are aligned through a dedication to excellence and quality. Understanding the privilege of working with the best leather Europe has to offer, Burgtec upholsterers appreciate its true sensitivity, and ensure considerate treatment of the hides to produce the finest pieces.

Burgtec is proud to be working alongside such a distinguished leather merchant bringing beautiful product to our clients - the perfect fusion of German precision, and Australian craftsmanship.



Established in 1987, Woven Image is an international interior finishes company with sustainability and design leadership at its core. From humble beginnings in Sydney, there are now Woven Image offices all throughout Australia, Asia and a network of distributors covering UK & Europe, North America and Indo-Pacific regions. Specialists in acoustic products, Woven Image continually nurtures its unique commitment to collaborate with local artists, developing a rich and ever-growing portfolio of Australian designs. Not only made with dematerialisation and upcycling front of mind, all Woven Image products utilise recycled or waste base materials, and printed designs use non-toxic inks with low VOC's.

Burgtec and Woven Image have been brought together through a shared devotion to environmental responsibility, partner diversity and product transparency. With benefits to every aspect of commercial workplaces, our partnership unites Australia's best acoustic material with the best workstation partitioning range on the market. Stronger together, our goal as product partners is to lead our respective markets into a sustainable, inventive future that exceeds creative expectations, thinking beyond current trends to bring the best screening solutions to the world of workplace design.



Laminex® has been a prominent Australian manufacturer for over 85 years. Outgrowing their first tin shed in Melbourne, to now managing large-scale, sustainable manufacturing plants all over the nation. Through innovation and a strong belief in Australian Made, Laminex® continues to invest in new technology to produce materials for local projects. Much like Burgtec, Laminex® recognises that the best way to support growth in Australia is through our own practice – investing in local manufacturing capabilities. It's this pride for country and operating principles of innovation and sustainability, that have aligned us, working to bring the best solutions to the workplace design industry.

Burgtec applies Laminex® material to workstation worktops, tabletops, and office storage solutions. With an industry-first curated matching powdercoat palette for bespoke furniture configurations, together we are delivering premium, never-seen-before product at affordable prices. As trends shift and projects evolve, our partnership will only strengthen, feeding the market new-edge designs in new-edge colour palettes and finishes.



FEATURE PRODUCT: STRATA 360



Go full circle.
Offering ultimate versatility and choice for the modern workplace.
Quiet and seamless, the Danish design will transform the way you work. Incorporating the world's leading accentuator technology, Strata 360 features a brand-new round leg design, offering timeless elegance to your workplace.

- Features:
- AFRDI Certified
 - Compatible with all Burgtec Screens
 - Available in Linear, Corner, and Back-to-Back configurations
 - Cable management / softwiring options available
 - Round leg design
 - Integrated Bluetooth and Mobile app
 - Silent operation



LINAK® produces electric linear actuator solutions to create smooth movement in a variety of applications. From healthcare to agriculture, comfort furniture, office interiors, or industrial automation.

Partnering with LINAK® Australia has brought about Strata 360 & Strata Circulate - our most advanced workstation systems to date. A fusion of European technology, Australian quality and modern flair brings a fresh take on office desking to the industry, without compromising on lead-time and cost.



FEATURE PRODUCT: STRATA CIRCULATE



Continuous movement.

Strata Circulate is a market leader in height adjustable workstation systems.

With the very best in actuator technology and a free flowing design, Strata Circulate will help you create a ergonomic and dynamic workspace for your team.

Features:

- AFRDI Certified
- Compatible with all Burgtec Screens
- Available in 4-Person, 90-Degree clusters
- Cable management/softwiring options available
- Shroud base design
- Integrated Bluetooth and Mobile app
- Silent operation



FEATURE PRODUCT: MODA STORAGE



A new classic.
Born from class, simplicity and style, Moda Storage is as timeless as it is functional.
A highly modular design, Moda will add another dimension to any setting, providing the luxury of flexibility for the future.

- Features:
- Made in Australia
 - Modular aluminium frame construction
 - Melamine carcass
 - Available in a range of units
 - 100mm Air Gap/Foot
 - Completely customisable



**PROJECT: GOVERNMENT OFFICES
CANBERRA**

Burgtec was the successful tenderer for Workstations and Seating on a Government Department project pilot building in Woden.

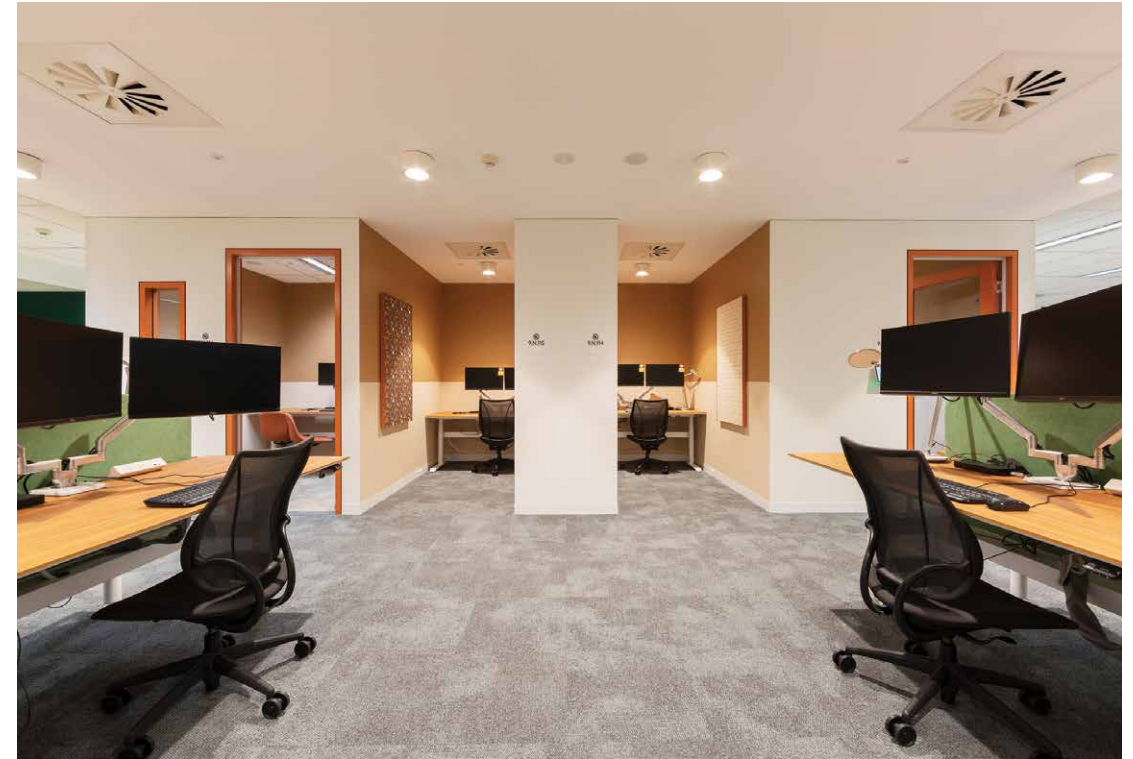
Working in close coordination with the head contractor and other trades, we provided completely custom workstations within extremely short lead-times, working under intense program pressure to complete on time prior to final project handover. The end result has been a very happy client, which is really all that matters upon project completion.

Burgtec is proud to have been involved in such a high profile, unique project, and we look forward to further engaging with the client, project management firm and designers again in the future.

Builder/Project Manager: AMA Projects

Architect/Designer: Cox Architects

End Client: Australian Government



**PROJECT: 2 CONSTITUTION AVENUE
CANBERRA**

The workplace of over 700 local ACT employees, Burgtec was engaged to manufacture, supply & install Workstation & Furniture solutions for the first 5 floors at 2 Constitution Avenue.

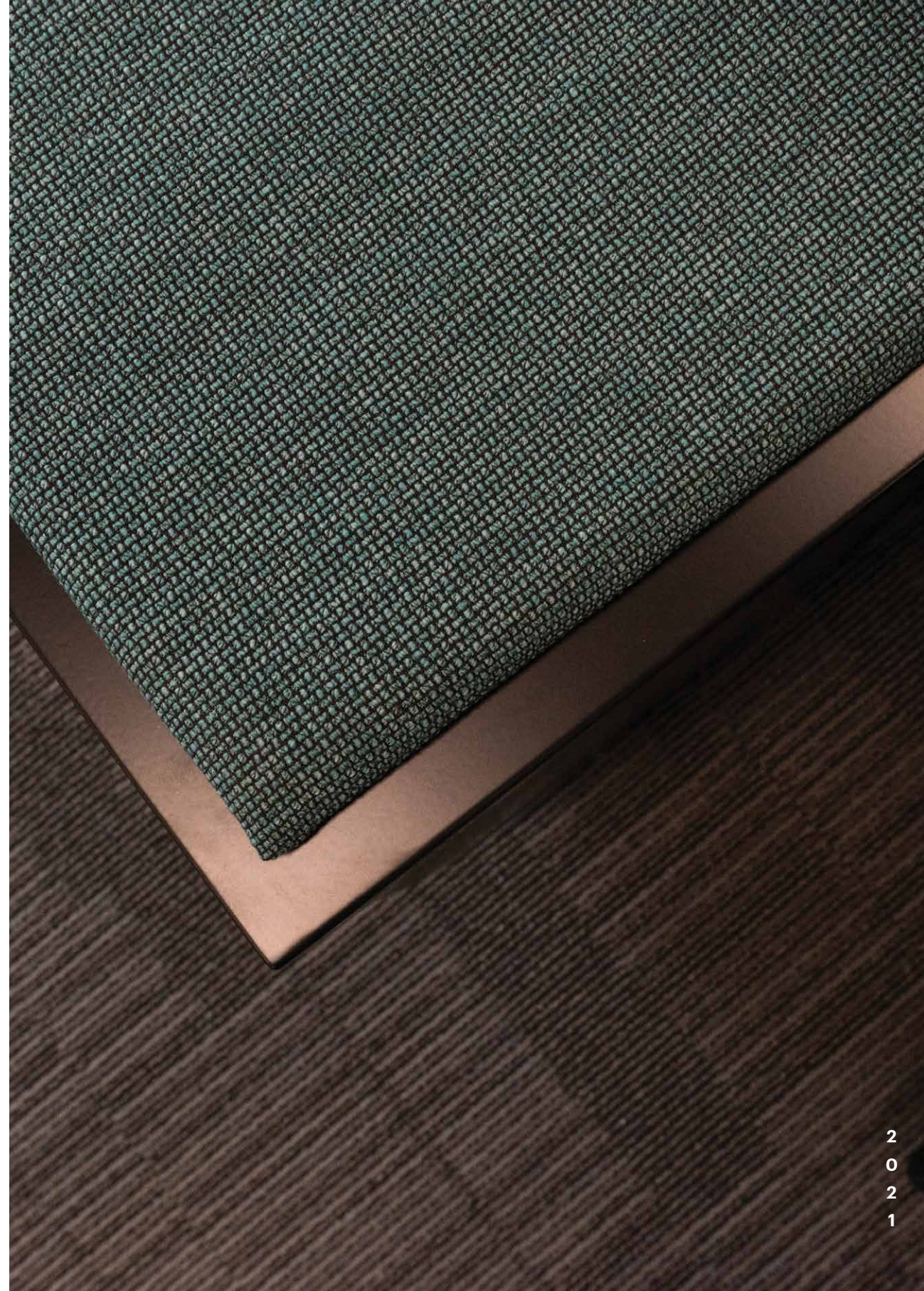
Working to a programme of 1 week to complete each floor, staged over several months, this multi-million-dollar scheme was the perfect challenge for our project team both on & off-site – and they delivered!

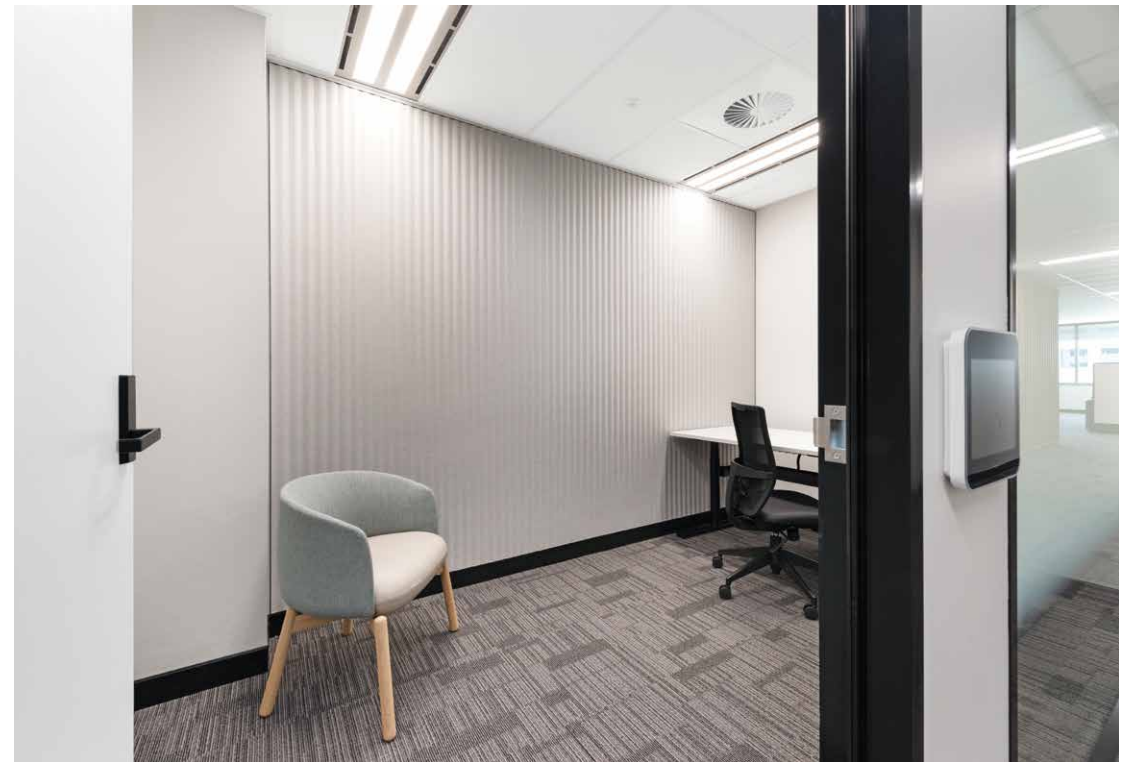
A predominantly neutral palette with selective upholstery bringing pops of colour throughout the Offices, Break-out Areas, and Focus/Meeting Rooms, this design presents a motivating, versatile workplace environment.

Builder/Project Manager: FDC Construction

Architect/Designer: IA Design

End Client: Australian Government





**PROJECT: THE STORE
NEWCASTLE**

At its peak in 1974, 'The Store' (Newcastle and Suburban Co-operative Society Limited) was the biggest and most successful co-operative society in Australia.

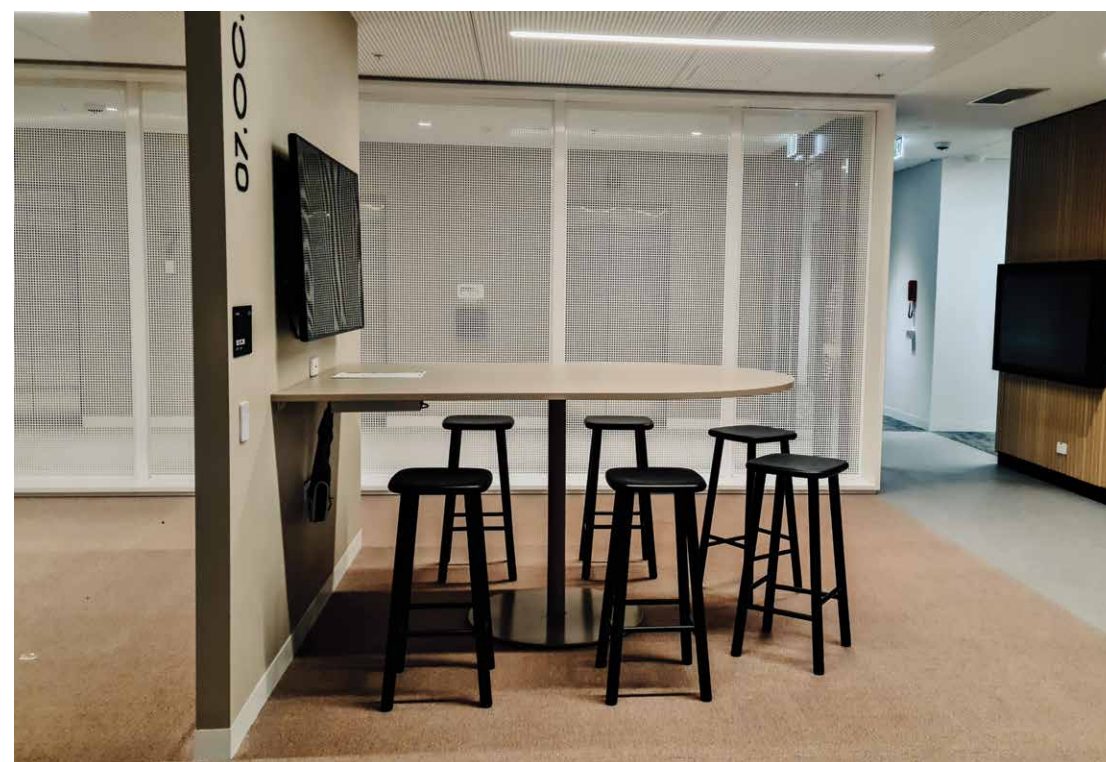
Today, after its redevelopment by DOMA Group & BLOC Constructions it stands as Newcastle's largest office building with over 9,400 square meters of workspace.

Accommodating various government departments, Burgtec designed, manufactured, and installed workstations for the 900+ local employees operating from 'The Store' in Newcastle.

A design by Bate Smart featuring Open Offices, Meeting Rooms, Breakout Areas, Concierge and Collaboration Spaces, Burgtec is thankful to be involved in this remarkable project.

Builder/Project Manager: BLOC
Architect/Designer: Bates Smart
End Client: Australian Government





On the other side of last year's crazy ebbs and flows, we find ourselves champing at the bit for everything the coming years have to throw at us.

Here's a little update on 2022.

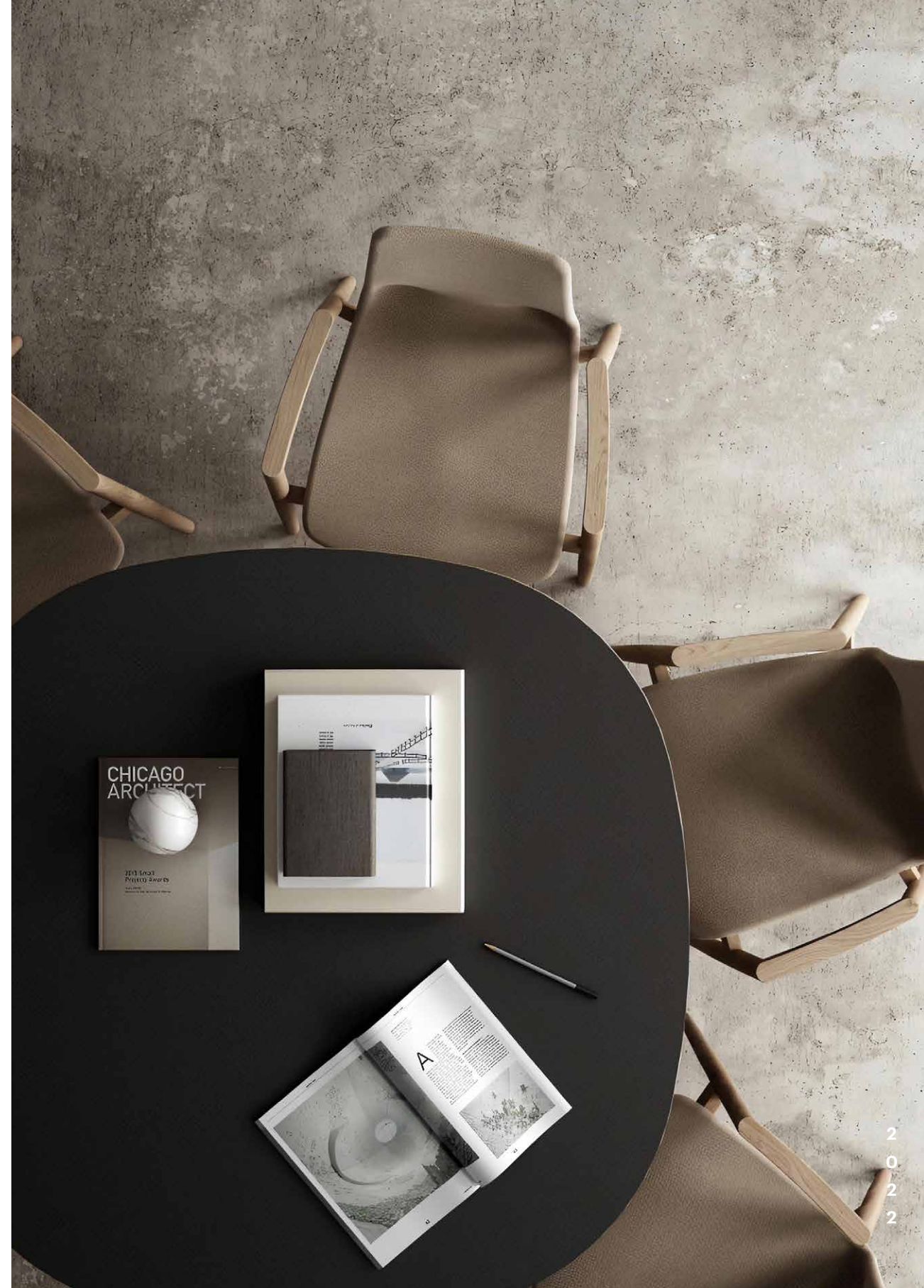


In major news for the Canberra furniture market, Burgtec is pleased to announce the acquisition of long-standing Canberra business INO Interiors.

This is a strategic movement forward for the current owner of INO Interiors, Valia Palmer; who is a well-known ACT industry veteran. This merge provides a natural succession for Valia, from what has been a prosperous tenure of almost 30 years serving longstanding Canberra clients to being part of a progressive manufacturing organisation delivering results on major projects around the country.

Burgtec and INO share many common underlying principles, and when the agreement was made to merge into a single operating entity there was a natural fit in terms of the personal, family-driven values shared by both companies, which clients have grown to love.

Valia will become the leader of the Burgtec Canberra office, and will be heavily involved in the day to day management of our business in Canberra, and facilitate clients' needs as they arise. We are excited about the prospects into 2022 and beyond, as we bring a fresh perspective to the ACT market; focussed on building genuine, high-trust partnerships, which bring tangible value to the table for our local clients.



DESIGN SHOW AUSTRALIA
MELBOURNE

Thanks to everyone who visited our stand, Design Show Australia, Melbourne 2022 was a huge success for Burgtec - even picking up the 'Best in Show' award for our category.

It was the start of many new relationships, and gave us the chance to reconnect with familiar faces. Thanks for coming and we can't wait to work with you!



Jam-packed full of new product, new projects and new partners, 2022 has been brighter than ever.

From growing our brand with the acquisition of a long-standing local Canberra business, to introducing the world's first workplace wellness booth to Australia, this year was sure to be a big one.

In October 2021, we were lucky enough to attend a highly recognised industry trade show in Chicago – NeoCon. NeoCon gave us the opportunity to not only reconnect with international peers that we know and love, but also to build new relationships with cutting-edge product designers and pioneers. Throughout the coming years, we will be announcing a number of exclusive partnerships with leading international brands to bring the best-of-the-best to the Australian market.

While we are opening our doors to international partners, manufacturing is our bread and butter. We will continue working with local collaborators to design and perfect new solutions under our own tin roof.

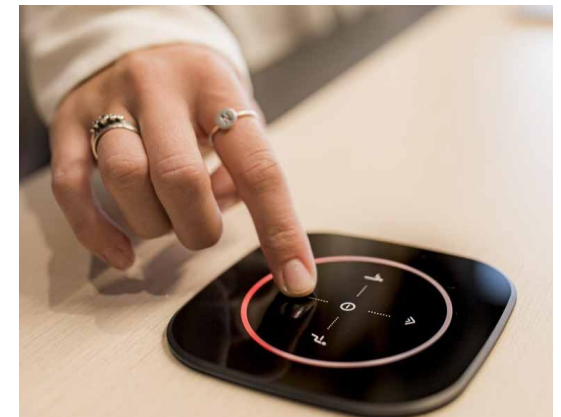
silen



Silen is an Estonian manufacturer of sustainable modular silent spaces. With world-record sound reduction and unmatched quality, Silen booths are the best on the market.

The Silen founders are experienced engineers who have been designing for more than a decade, and Burgtec is welcoming them to Australia.

Our new partnership means Burgtec will be exclusively introducing Australia to the world's first premium relaxation booth – MindSpa, along with Silen's other highly awarded ranges.



The #1 user-friendly software platform for Room, Desk & Visitor Management, and Digital Signage. GoBright provide state-of-the-art solutions for progressive workplaces.

Aligned in our commitment to bettering the modern office through smart engineering and technology, it's a natural fit between Burgtec and GoBright and we are proud to be flying their flag in Australia for workplace.

We have some exciting announcements to make about this new partnership and we can't wait to share them with you.



**PROJECT: DEFENCE HOUSING AUSTRALIA
CANBERRA**

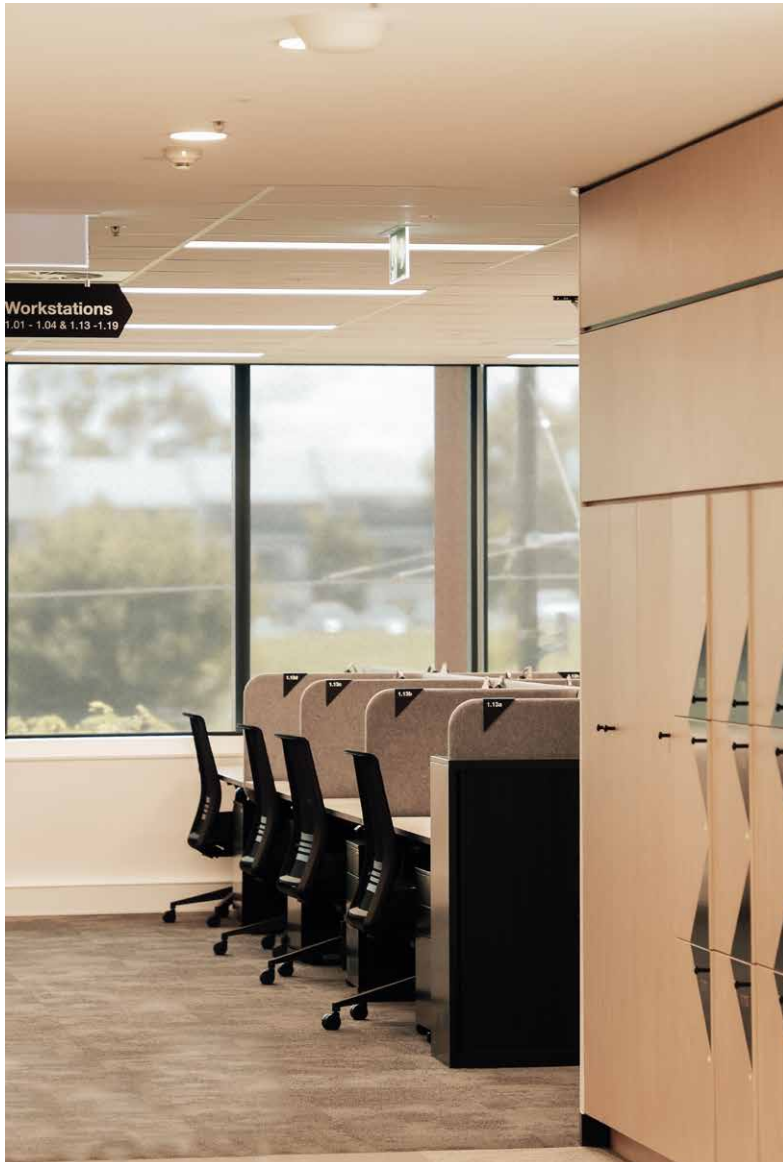
The new DHA head offices in Gungahlin provide a state-of-the-art workplace for over 250 local employees.

With an appreciation for the value of truly Australian Made solutions, the client chose Burgtec to manufacture and install the complete Workstations, Furniture & Lockers package for over 2000sqm of landmark work space. Burgtec offered a single-source solution, meeting the design intent perfectly and providing numerous selections for each item to make for a simple client decision process. The project was delivered ahead of program, with zero defects and a delighted client, builder and designer.

This was a great project to be involved in, working with Construction Control and CK Architecture to create a functional & inspiring space featuring open plan offices, breakout & collaborative areas, and high-end meeting rooms.



Builder/Project Manager: Construction Control
Architect/Designer: CK Architecture Australia
End Client: Australian Government



PROJECT: CRICKET NSW

Cricket NSW is moving to one of Australia’s leading sporting precincts in Sydney, with a new centre by Cox Architecture and Buildcorp.

Designed to transform the organisation on every level, the new facility includes a modern, mezzanine workplace with cricket nets below – immersing over 150 employees in the action!

Having supplied the state-of-the-art Workstations and Seating package for this project, Burgtec can’t wait to share more photos.



Unveiled in 2019, the landmark design of the City of Greater Geelong’s new multi-building precinct by Cox Architecture is already highly acclaimed.

Burgtec is on site with more than 700 fit-for-purpose workstations and a complete range of seating, storage, pods & loose furniture solutions.

A PCA A-Grade workplace of the future, Burgtec is thrilled to be involved in this pioneering project bringing local employees together from seven different offices.

The new workplace is designed to the highest sustainability standards with a 6 Star Green Star Design and As-Built Rating as well as a 6 Star NABERS Energy Rating.



Burgtec has been engaged for the entire workstations and loose furniture package for Maitland City Councils new offices.

Working closely with Head Contractor Hansen Yuncken, Burgtec provided a 100% technically conforming package that met the design brief, strict project timeframes and - importantly - the clients' budget. The project involves the restoration of a 150 year old heritage town hall, and brand new integrated office facilities.

Being close to where our factory is based in the fastest-growing regional area in NSW, this project is close to our heart, and we are proud to be working on such a landmark regional project.



WIP: BENDIGO GOV HUB

Burgtec has been awarded the Workstations and Furniture package for Bendigo GovHub - a \$90 million sustainable workplace to centralise and accommodate 1000 government employees.

This flexible, campus-style design by Lyons will invigorate the public workforce in regional Victoria. Featuring large agile spaces and integrated departments, it will promote collaboration and allow more efficient use of each floor.

On track for a late 2022 completion, we will keep you updated as our custom Workstations, Seating, Soft Furnishings, Tables and Storage Solutions are installed.



Builder/Project Manager: Icon
Architect/Designer: Lyons
End Client: Victorian Government



Canberra

Perth

Sydney

Newcastle

Central Coast

Melbourne

