

burgtec.



Well-designed solutions to elevate
and support your people.





People are the heart of every organisation. A well-designed workplace is one that welcomes, supports and elevates. It inspires people to bring their best self to work, everyday.

At Burgtec, we're genuine about partnerships. Bringing our expertise to the table, we listen with intent to understand the individual needs of our clients. We're proud to provide service as it should be, never taking our supplier, peer or client relationships for granted.

Since 1981, we've been local first. We design and manufacture our furniture here in Australia, using locally produced materials and suppliers at every step possible. We do this because it just makes sense – quicker lead times, true sustainability, better control of budgets and never needing to compromise on quality.

A Burgtec workplace balances practical needs with good design and ingenuity. It's a space that sits right, a place that nurtures relationships and potential.

Deriving from the German word 'Castle', Burgtec's name was inspired by the hometown of our founder Wolfgang Schubert. Home to the world's longest Castle, Burghausen is where the Schuberts lived for generations before moving to Australia.



1981

THE FIRST OFFICE CHAIR



German-born Australian, Wolfgang Schubert, brings the first gas-lift office chair into Australia from Germany. Burgtec is born and our first office and warehouse is purchased in Balcatta WA.

1984

ACCENT OFFICE INTERIORS IS FOUNDED



Sydney-based Engineer, Neil Kennard begins Accent Office Interiors. His 5 sons ages 5-15 begin their journey in the world of workplace interiors and furniture, spending every spare minute in the new studio and factory.

1985

BURGTEC IS LISTED ON THE WA GOVT CONTRACT



Back in WA, the young brand Burgtec is getting traction and becomes a preferred supplier of office seating on the State Government contract.

1986

ACCENT IS LISTED ON THE NSW GOVT CONTRACT



Not long after, Accent follows suit, getting listed on the State Government furniture suppliers contract for NSW.

1993

THE FIRST SUSTAINABLE WALL PARTITION SYSTEM



Accent designs and begins manufacturing System 70. As a cost-effective, acoustic and lightweight alternative to structural walls, it influences the then modern shift towards individual offices for staff.

2003

AMS FURNITURE IS FOUNDED



Nathan Kennard begins AMS Furniture as the contract manufacturer of System 70. With advanced facilities he expands into manufacturing other types of office furniture including melamine storage, selling wholesale.

2017

OFFICEPACE IS FOUNDED



After almost two decades of building the core brands, a new branch of AMS is started by Joel Kennard - bringing manufacturers prices direct to project clients. Pace Joinery is also established.

2019

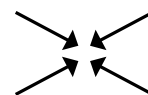
NEW OWNERSHIP



Together, AMS & Officepace acquire Burgtec from Franz Schubert, the Founders son, taking Burgtecs manufacturing national.

2020

THE MERGE



Accent, with multi-generation family ownership now, joins AMS, Officepace and Burgtec, and all divisions are rebranded under one name - Burgtec.

2021

DESIGNSUITE



Burgtec pioneers the first-of-it's-kind 3D Configurator. DesignSuite allows designers to create furniture designs with custom finishes, sizes and configurations, and then export their designs in a range of file formats.

2021

SUPPLY NATION



A new generation of the family with Wiradjuri roots joins the leadership team, and we double down on fortifying relationships with Indigenous businesses, officially announcing our Supply Nation membership.

2022

ANOTHER MERGE



Burgtec announces the acquisition of INO Interiors. The merge is a natural succession for the founder of INO and industry veteran Valia Palmer, who will continue a prosperous 30 years serving Canberra clients.

2022

NEW YEAR, NEW LOOK



After looking inwards to review and refine the brand, we launch our new identity - about much more than just visuals, it better reflects who we are and our direction.





WHAT MAKES US TICK

Authenticity

Real relationships. Real solutions.

A family-operated organisation with longstanding and loyal clients, we are driven by genuine relationships. The people around us are our motivation to do and be better through every layer of our business. To us, Authentic design is to imagine products for problems for which a solution doesn't yet exist, and guide them to life. Drawing pretty lines on a page means nothing without a genuine purpose, a genuine solution in mind - we connect good people to authentic design to make everyday working lives easier and more enjoyable.

Innovation

Creative thinking and curiosity are what drive us.

Even without an order to justify the investment, we are committed to discovering technology and engineering that betters the working lives of our clients and their people. New ideas, executed well, is what gets us up in the morning.

Responsibility

Longevity is at the heart of everything we do, from relationships through to product. Our warranties aren't just a piece of paper. We go beyond the status quo, offering audits, replacements and repairs for the lifespan of your products. We take our responsibility to you, and the world at large, very seriously.

Collaboration

We don't believe in one-size-fits-all. Every client is different, and has different needs - so we collaborate with you to customise fit-for-purpose solutions that work for you and your people. Over the years we've refined the collaboration process to be efficient, effective, and most importantly easy for you - from initial contact we listen with intent, bringing our expertise to the table when it counts, to provide service as it should be, never taking our supplier, peer or client relationships for granted.

CERTIFICATIONS / AFFILIATES



The iconic Australian Made logo is the true mark of Aussie authenticity. It represents 'the real thing'. As Australia's most trusted and recognised country of origin symbol, we are proud to be one of the only certified manufacturers in our field. When it comes to commercial furniture, local expertise makes all the difference. We are passionate about keeping jobs local and offering world class design and workmanship from our own manufacturing facilities.



Supply Nation connects its members to Indigenous suppliers to build a vibrant and prosperous Indigenous business sector. At Burgtec, we believe embracing diversity through our staff members, our partnerships, and our community relations is the framework for creating positive change. As a family-owned company with Wiradjuri blood, we are passionate about honouring the deep history, culture, and achievements of The First Australians. Our Supply Nation membership reinforces our commitment to diversity within our workforce and procurement processes.



The Australasian Furnishing Research & Development Institute (AFRDI) is an independent technical organisation, operating a system of quality certification for furniture components. To receive AFRDI 'Blue Tick' certification, a product must pass a strict series of performance, function and safety tests. Burgtec's Workstation range and a selection of other seating pieces are AFRDI certified to guarantee we are providing the best quality product.



Global GreenTag is one of the world's most robust, trusted and widely recognised ecolabels. Buyers want the best in healthy eco-products – Global GreenTag makes it easy to recognise. Burgtec is proud to have certification on our Strata 360 Workstations giving confidence in our manufacturing facilities to operate efficiently and produce sustainable solutions.



Burgtec is certified for a number of standards developed by the International Organization for Standardization (ISO). This means we have the seal of approval from an external certification body as effectively meeting internationally recognised standards in Quality Management (ISO 9001:2015), Health and Safety Management (OHSAS 18001) and Environmental Management (ISO 14001:2015) in the day-to-day operation of our business.



KEY PARTNER: SILEN

When peace of mind
works better than coffee.

Silen is an Estonian manufacturer of modular silent spaces and is the first office-pod manufacturer to receive the CarbonNeutral® certificate for its entire product range. With world-record sound reduction and unmatched quality, Silen booths are the best on the market.

Working together is a natural fit for us, with an aligned drive to push boundaries and bring innovative, well-made solutions to businesses that believe in genuine value. Our partnership means Burgtec is exclusively distributing the Silen range in Australia, and we believe our local clients will see the value in the real deal. The range covers every possible requirement for an acoustic workplace with three product lines, including the world's first premium relaxation booth.

See our website for more
information on the range.

[View Silen 2023
Sustainability Report](#)



kvadrat maharam

Laminex®

The longstanding partnership of Denmark-based Kvadrat and US-based Maharam is founded on a shared philosophy of design innovation and service excellence. A dedication to furthering contemporary visual culture, a commitment to the environment, and a rich history of family ownership has strengthened this bond since 2001. Leaders in their respective markets, Kvadrat and Maharam's combined product offering represents the largest range of textiles available worldwide.

Burgtec has formed a mutually-beneficial alliance with Kvadrat Maharam, to bring together a curated palette of textile finishes that meet the current market requirements.

By providing a selection of clearly defined, accurately priced, on-trend finishes, this brand partnership adds further value to our clients; providing specifiers with the confidence that design integrity will be maintained, as well as giving certainty around pricing - from initial specification right through to project delivery.

As a leading Australian manufacturer sharing the commitment to family ownership, quality design and consistent quality, Burgtec is proud to collaborate with a true market leader in commercial textiles. This partnership will continue to grow and evolve, as we work together to produce world class, Australian-made upholstery solutions for large-scale commercial fitouts across all sectors of the market.

Laminex® has been a prominent Australian manufacturer for over 85 years. Outgrowing their first tin shed in Melbourne, to now managing large-scale, sustainable manufacturing plants all over the nation.

Through innovation and a strong belief in Australian Made, Laminex® continues to invest in new technology to produce materials for local projects. Much like Burgtec, Laminex® recognises that the best way to support growth in Australia is through our own practice - investing in local manufacturing capabilities. It's this pride for country and operating principles of innovation and sustainability, that have aligned us, working to bring the best solutions to the workplace design industry.

Burgtec applies Laminex® material to workstation worktops, tabletops, and office storage solutions. With an industry-first curated matching powdercoat palette for bespoke furniture configurations, together we are delivering premium, never-seen-before product at affordable prices. As trends shift and projects evolve, our partnership will only strengthen, feeding the market new-edge designs in new-edge colour palettes and finishes.

DESIGNSUITE

Visualise.
Customise.
Specify.



For a long time, there was a hole in the furniture specification process. Specifiers were bound to time-consuming correspondence with suppliers, simply to get a 'yes' or 'no' on whether a specific furniture configuration was available. Not to mention the wait time on the relevant files.

We watched overseas software developers outside the industry come close, but no one could provide an all-in-one solution that met every single one of the issues.

So we decided to innovate. In our Central Coast office, we built DesignSuite from the ground up. Launching in 2021 with a few core Workstations and Modular Lounge ranges, and rapidly progressing towards the entire product range, DesignSuite has had 15 updates already.

You design it, we make it. Bringing unique designs to life in real-time with a library of nearly 800 House Range finishes, infinite configuration options, and the key 2D / 3D file exports as requested by specifiers - DesignSuite puts everything specifiers need to fill floorplans and furniture schedules at their fingertips, any time of the day or night without a single email or phone call. All you need is a login, which we set up for you on request.

And there's no waiting for lead-time confirmations either. It's always 4-6 Weeks!

Simplifying the furniture specification process down to a matter of hours or less, there is yet to be another tool like it out there. It's an evolving software that grows stronger as we receive feedback from users.

“Possibly the biggest step forward our industry has seen in the last 20 years, in terms of simplifying furniture specification. DesignSuite is already saving substantial time for my team, as well as enhancing the specification in our projects.”

Associate Director, Top-Tier Architecture Firm







“My colleagues asked ‘How are you going to pull this project together in 6 weeks?’ I told them I’m dealing with Burgtec.”

Designer, Leading Architecture Firm



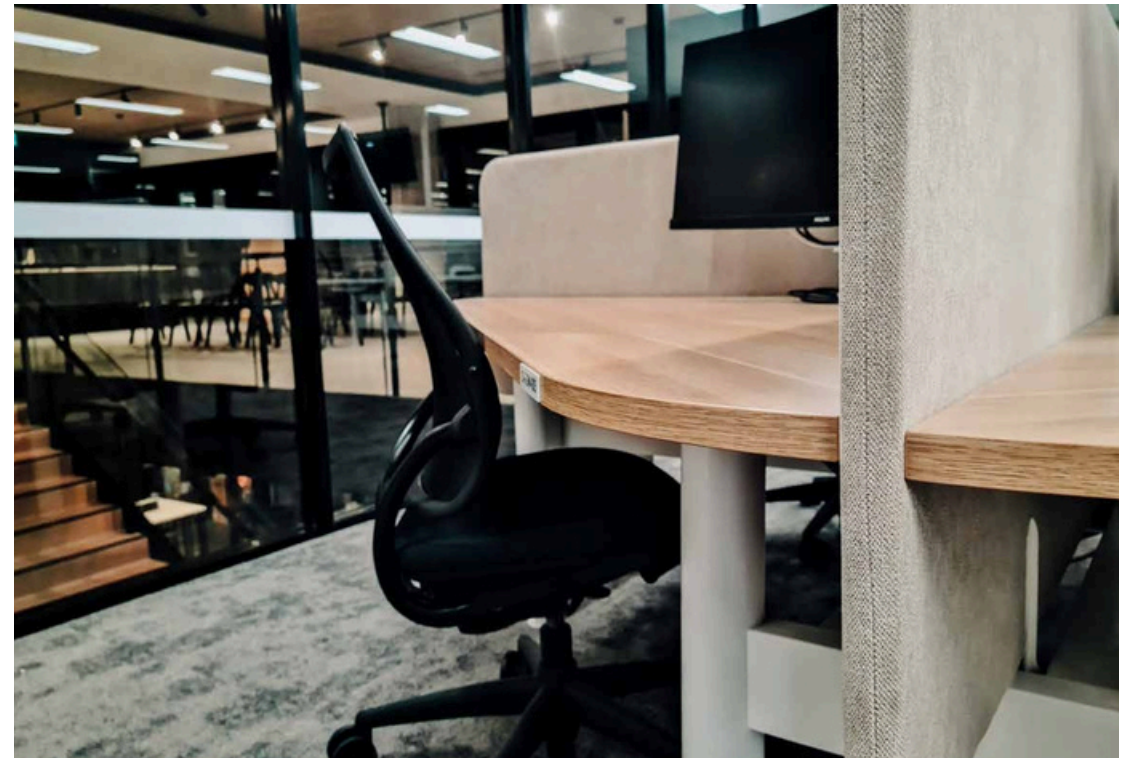


From vision to working reality.

Here are just some of the
standout workspaces we've
created in collaboration
with our clients.



**PROJECT: THE
STORE NEWCASTLE,
NSW**



Items: Workstations

Completed: 2021

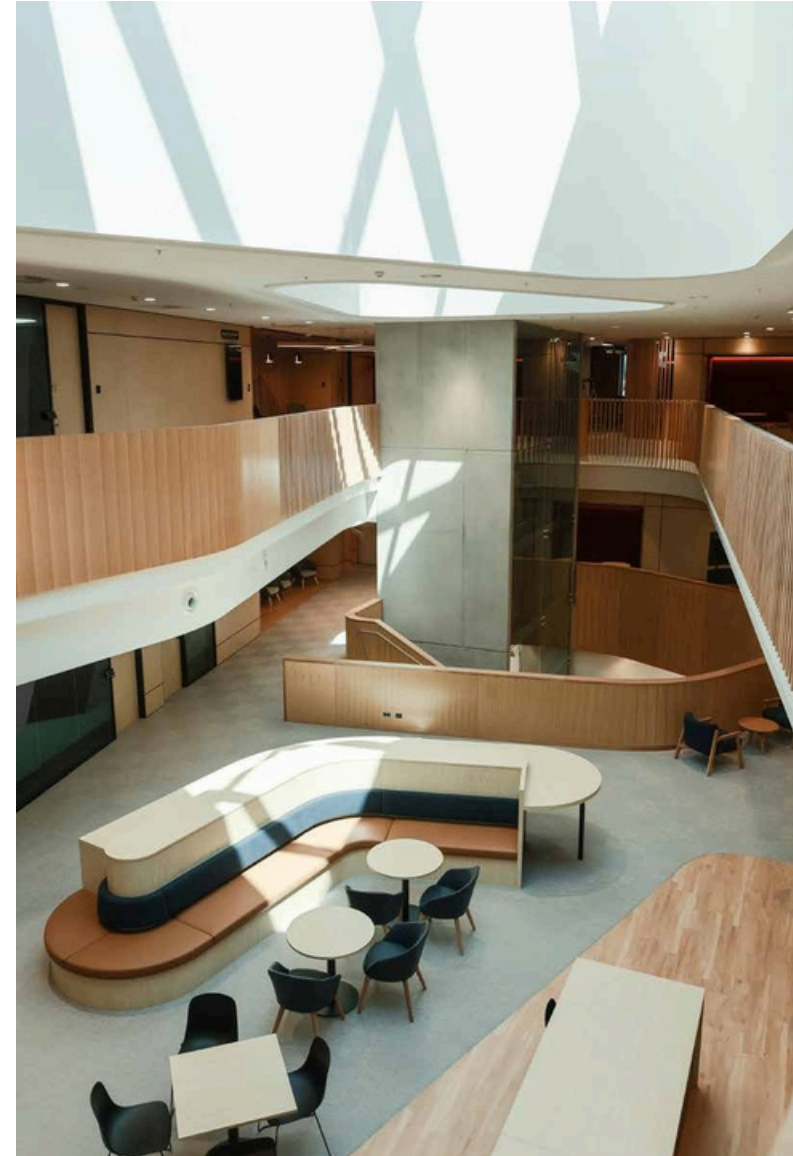
Designer: Bates Smart

Project Manager: BLOC

Constructions Project Size: 9400m2



**PROJECT: DEFENCE
HOUSING CANBERRA, ACT**



Items: Workstations, Furniture & Lockers
Completed: 2022
Designer: CK Architecture
Project Manager: Construction Control



**PROJECT: GOVERNMENT
OFFICES CANBERRA, ACT**



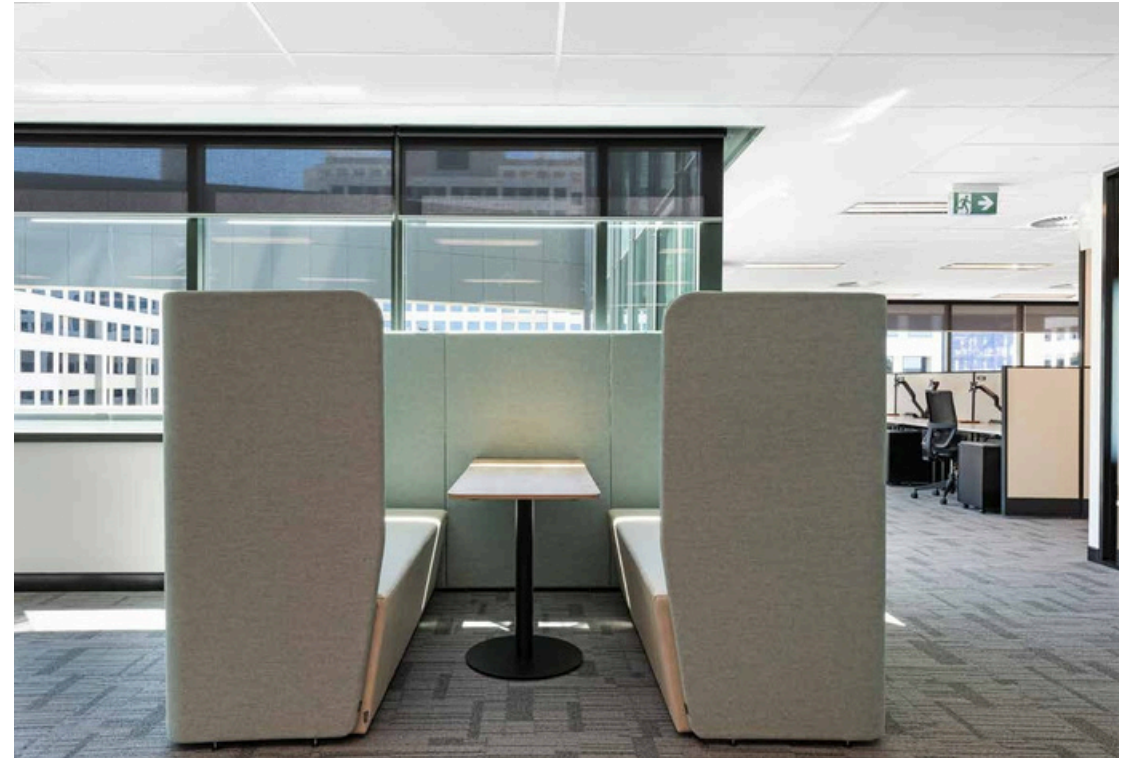
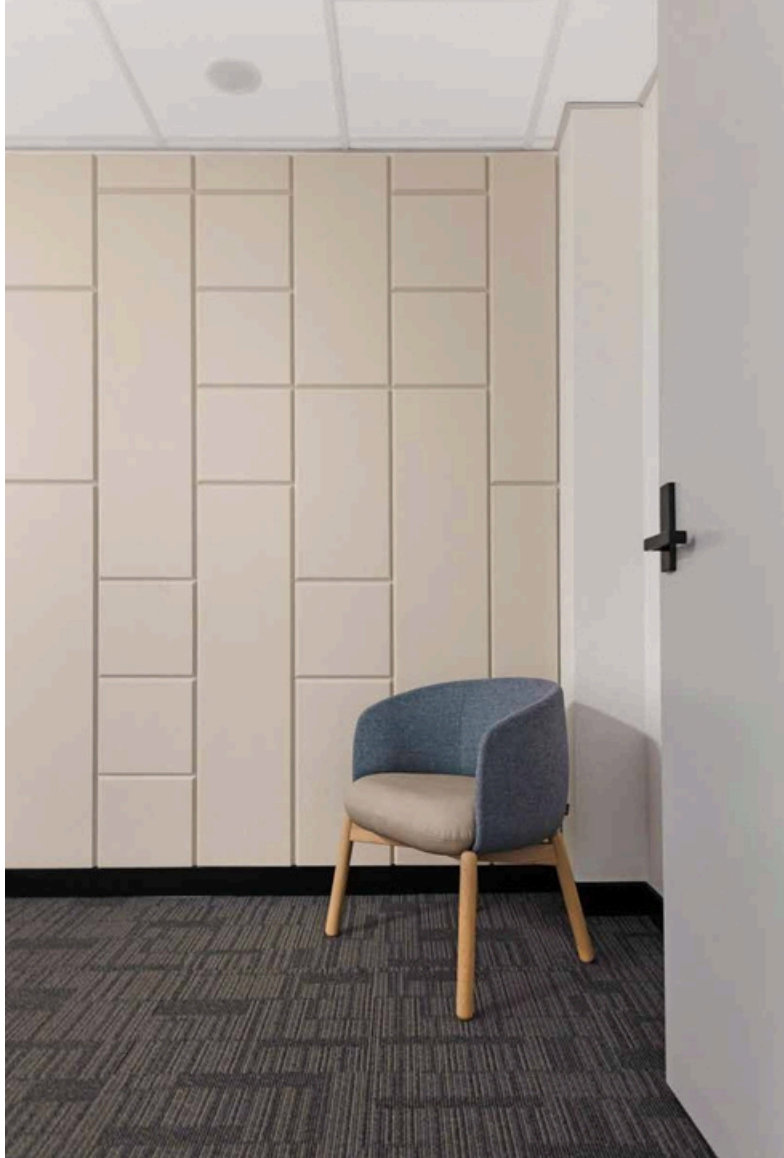
Items: Workstations & Furniture

Completed: 2021

Designer: IA Design

Project Manager: FDC

Constructions Project Size: 9000m2



PROJECT: BEACH
ENERGY ADELAIDE, SA



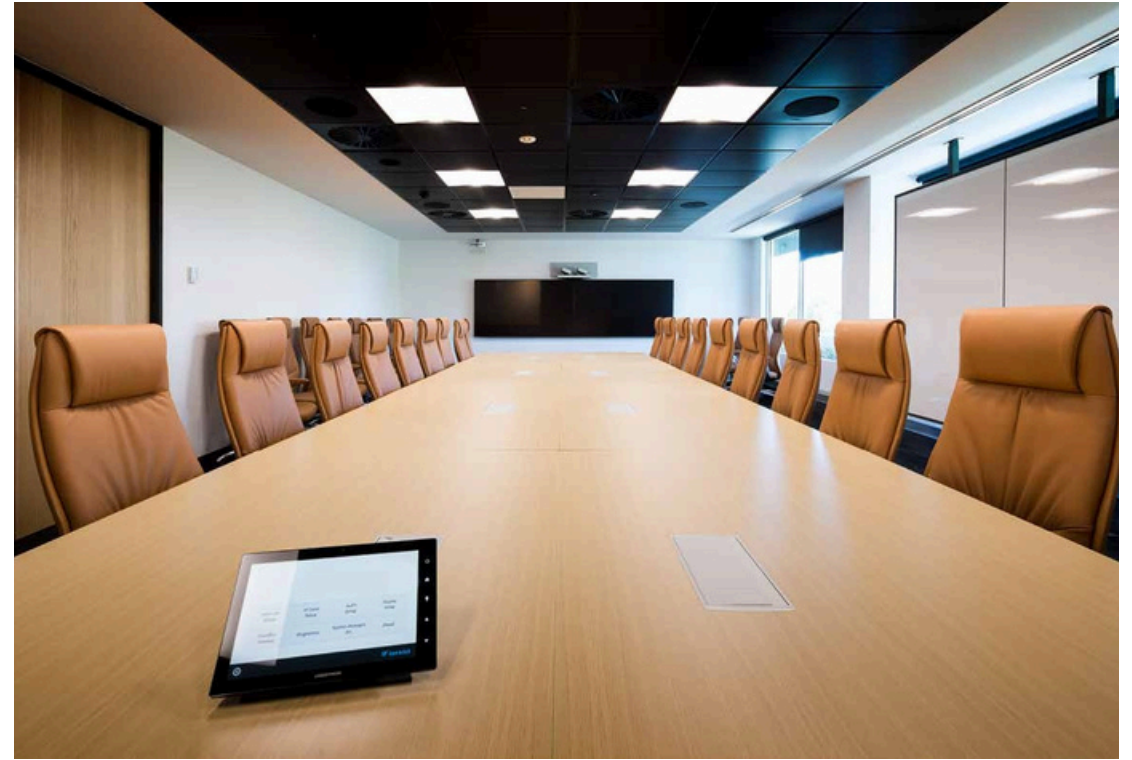
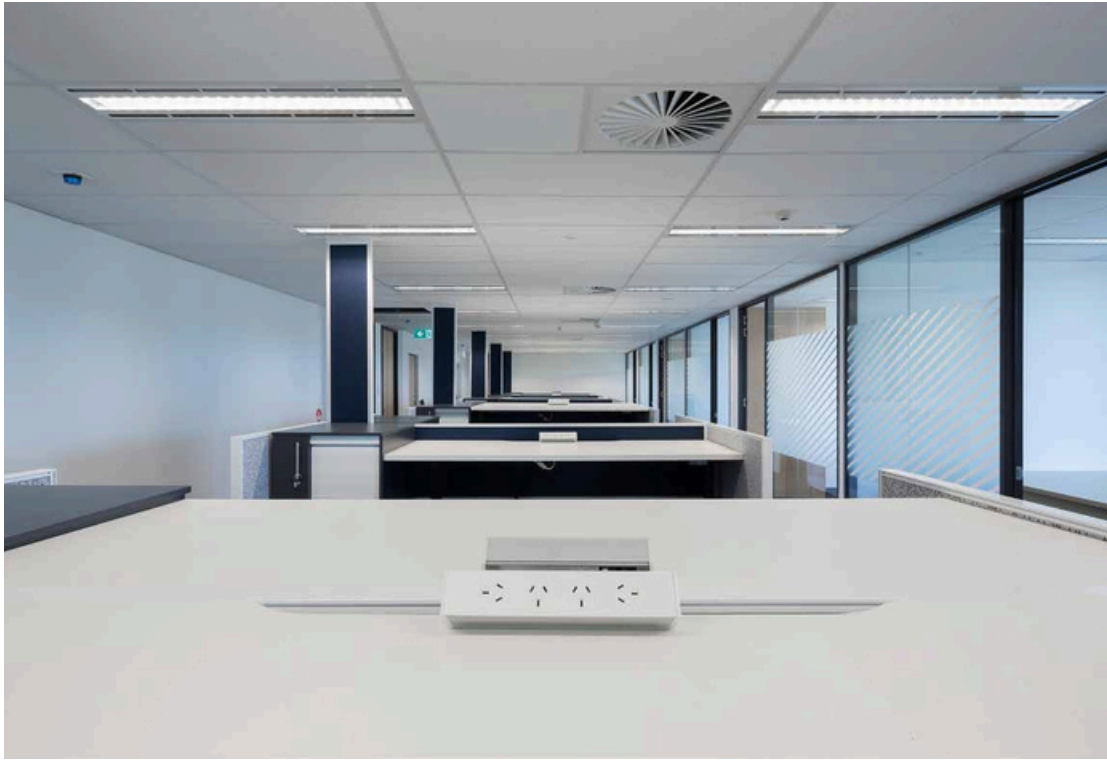
Items: Workstations & Furniture
Completed: 2019
Designer: Unispace
Project Manager: Unispace



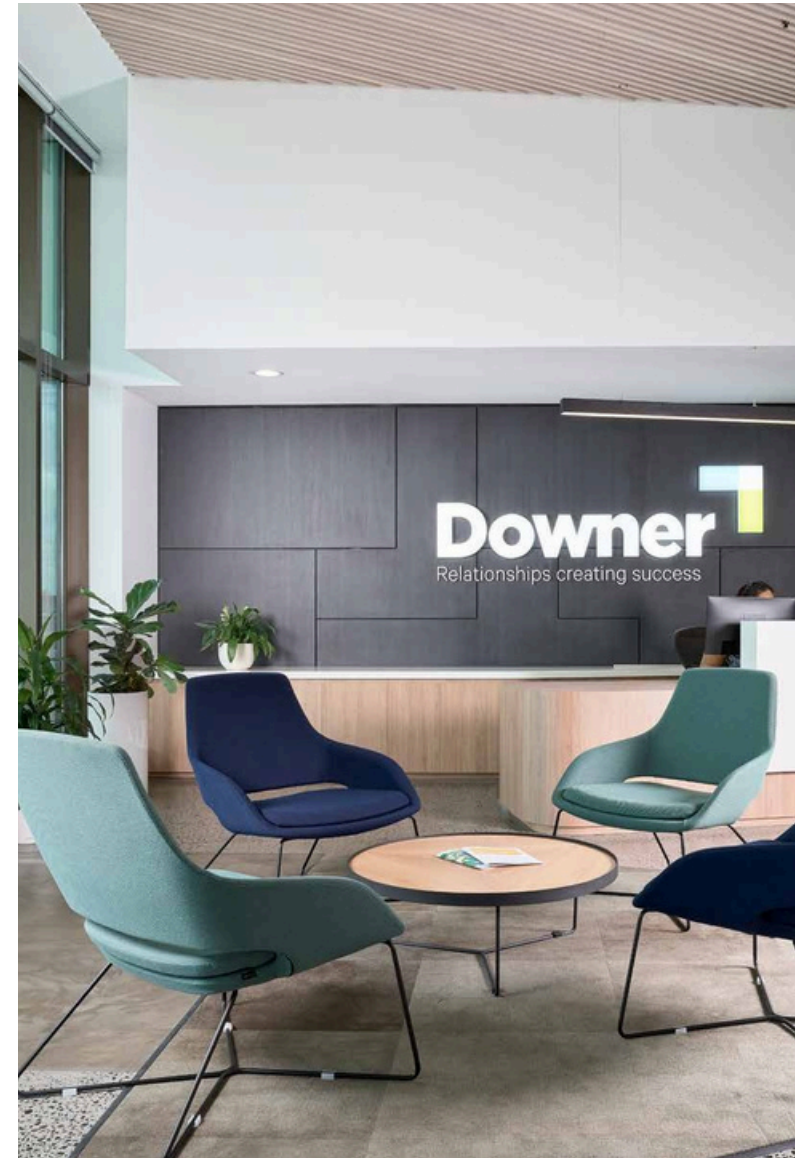
**PROJECT: LOCKHEED
MARTIN CANBERRA, ACT**



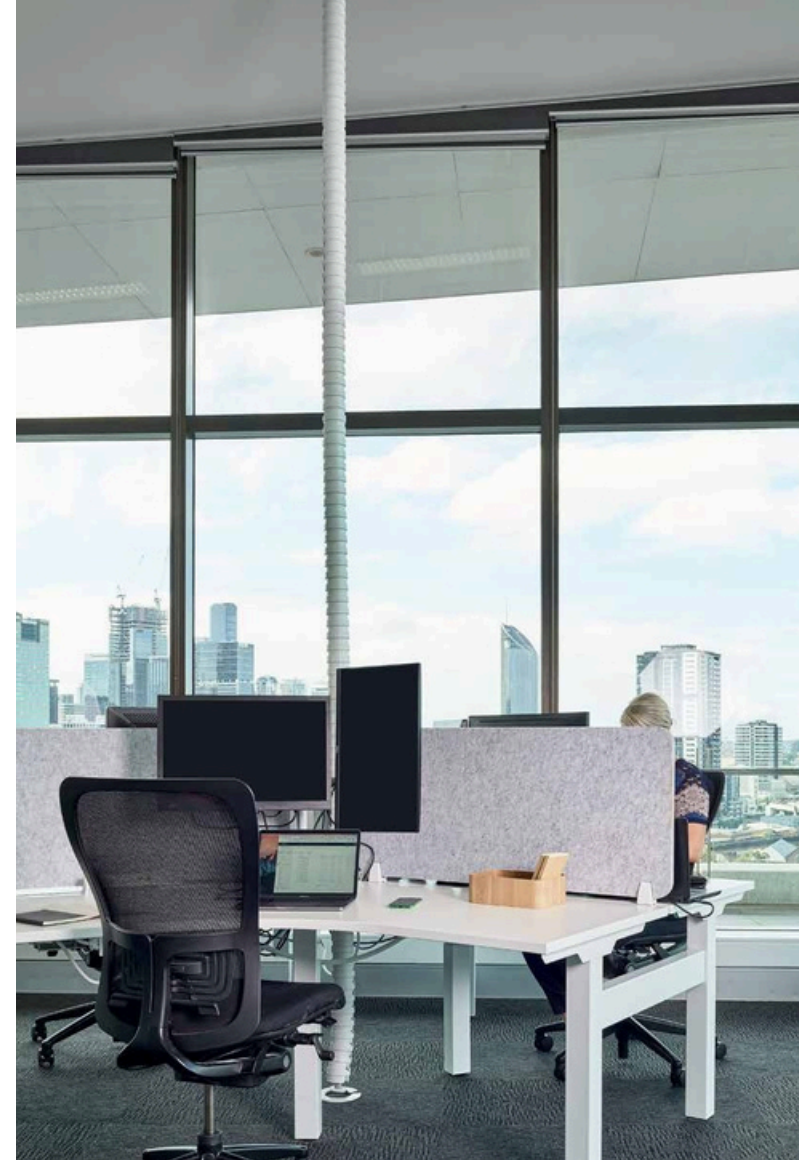
Items: Furniture
Completed: 2019
Designer: AMC Architecture
Project Manager: Jones Lang Lasalle
(JLL)



PROJECT: DOWNER
BRISBANE. QLD



Items: Workstations & Furniture
Completed: 2018
Designer: Unispace
Project Manager: Unispace





**WIP: GEELONG COUNCIL
GEELONG**

Unveiled in 2019, the landmark design of the City of Greater Geelong's new multi-building precinct by Cox Architecture is already highly acclaimed.

Completion expected in June, Burgtec has hit site with more than 700 fit-for-purpose workstations and a complete range of seating, storage, pods & loose furniture solutions.

A PCA A-Grade workplace of the future, Burgtec is thrilled to be involved in this pioneering project bringing local employees together from seven different offices.

The new workplace is designed to the highest sustainability standards with a 6 Star Green Star Design and As-Built Rating as well as a 6 Star NABERS Energy Rating.

Builder/Project Manager: Watpac
Architect/Designer: Cox Architecture
End Client: City of Greater Geelong



**WIP: BENDIGO GOV HUB
BENDIGO**

Burgtec has been awarded the Workstations and Furniture package for Bendigo GovHub - a \$90 million workplace to centralise and accommodate 1000 government employees that improves on sustainability through using one of Victoria's largest timber frames, solar panels, water and energy monitoring systems.

This flexible, campus-style design by Lyons will invigorate the public workforce in regional Victoria. Featuring large agile spaces and integrated departments, it will promote collaboration and allow more efficient use of each floor.

On track for a late 2022 completion, Burgtec is installing customised Workstations, Seating, Soft Furnishings, Tables and Storage Solutions.

Builder/Project Manager: Icon Fairbrother

Architect/Designer: Lyons

End Client: Victorian Government





COLLABORATE WITH US

We'd love to hear from you.

burgtec.com
1300 585 065
info@burgtec.com

HEAD OFFICE / FACTORY

Central Coast
10A Corella Close,
Berkeley Vale NSW 251

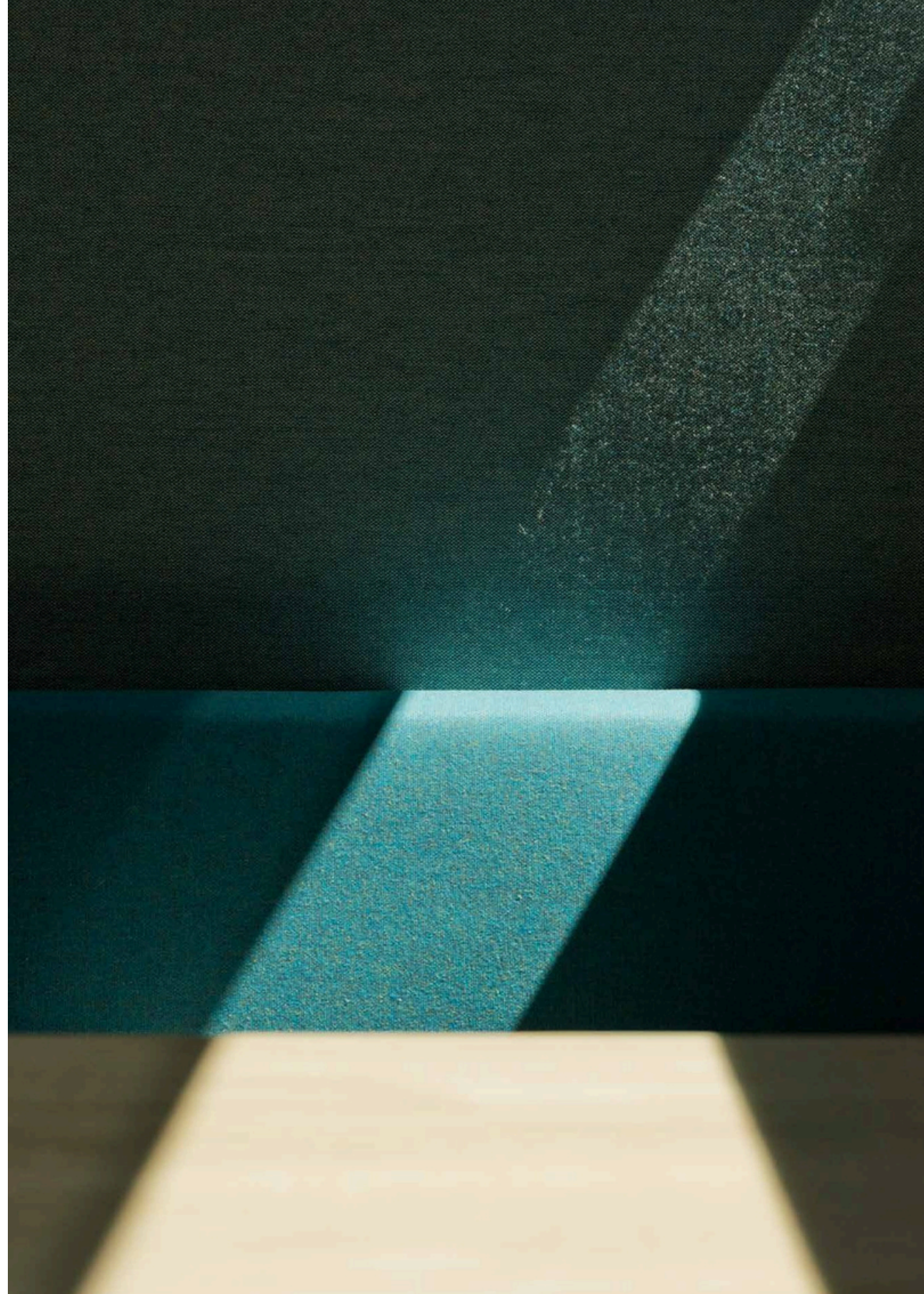
SHOWROOMS

Canberra
Suite 1, Ground Floor, 15 Moore St,
Canberra Act 2601

Sydney
Level 1, 36 Carrington St,
Sydney Nsw 2000

Melbourne
Suite 5, Level 4, 289 Flinders Ln,
Melbourne Vic 3000

Brisbane
COMING SOON



Sydney
Canberra
Melbourne
Brisbane

