

Flix

Lounges



burgtec.

Low, modern and modular.

The Flix Lounge is the very definition of flexible luxury. Its fresh, modular design inspires workspaces of tomorrow, with endless combinations to cater for every work style and purpose.

The Flix oozes comfort, sitting close to the ground with sculptural, cushioned seating that is soft and supportive.

Featuring lounges and ottomans in an array of sizes, the Flix lounge range can be customised and re-arranged for any specific space or purpose.



Features

- Made in Australia
- Modular lounge system
- Available in ottoman, standard, medium & tall back
- Available in concave, convex & straight modules
- Available in 1, 2 and 3 seater modules

Options

- Option to add arms
- Option to add 300mmD rear work bench
- Option to add GPO units

Finishes

- Black glide feet
- Burgtec house fabric range
- Two-tone upholstery available

CUSTOMISED CONFIGURATIONS

Flix offers a versatile, space-saving design, featuring a tapered back and various modules, including linear, curved and corner pieces, allowing for endless custom configurations.

Whether you need a comfortable gathering spot, a peaceful retreat, or seating for a busy area, Flix provides flexible options that adapt to any environment.

The Flix 'Tall' module serves as a convenient room divider, while the ottoman modules complement the collection and can be positioned freely or incorporated into larger arrangements.



AUSTRALIAN MADE

Burgtec is serious about manufacturing furniture here in Australia using locally sourced materials. It just makes sense in order to provide world-class furniture with quicker lead times and true sustainability.

Designed and Manufactured in Australia the Flix lounges are available within a 4-6 week lead time.



LOCAL FINISHES

Burgtec's wide range of local house fabrics are available with no extra lead time.

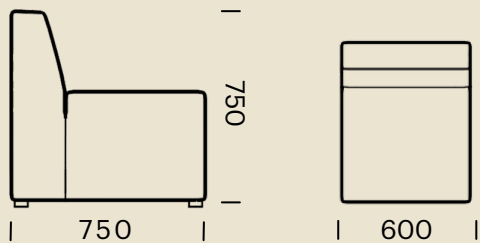
With hundreds of options available, each Flix modular lounge can be uniquely cohesive with its environment, without the worry of possible supply chain delays.

**DIMENSIONS (MM) -
FLIX STANDARD BACK**

1 Seater Straight



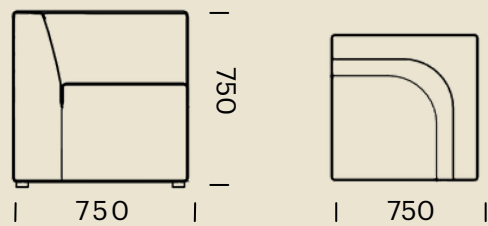
FLX-SB-1SST



1 Seater 90deg Corner



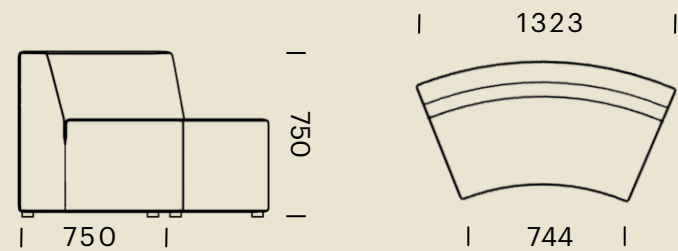
FLX-SB-CNR



45 Degree Concave



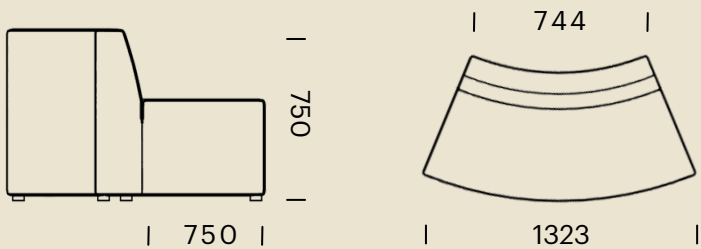
FLX-SB-45CAV



45 Degree Convex



FLX-SB-45CVX

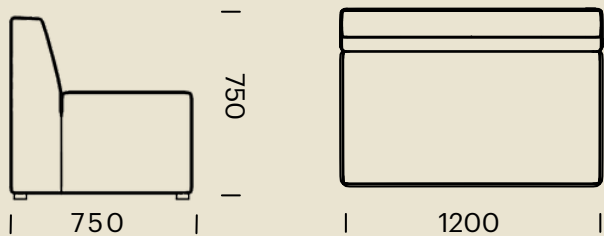


**DIMENSIONS (MM) -
FLIX STANDARD BACK**

2 Seater Straight



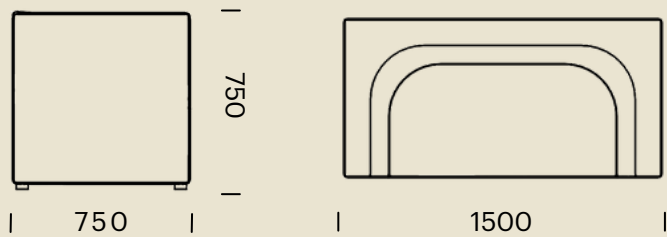
FLX-SB-2SST



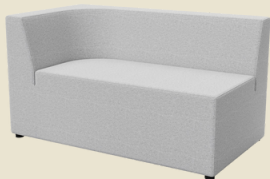
2 Seater with Left & Right Arms



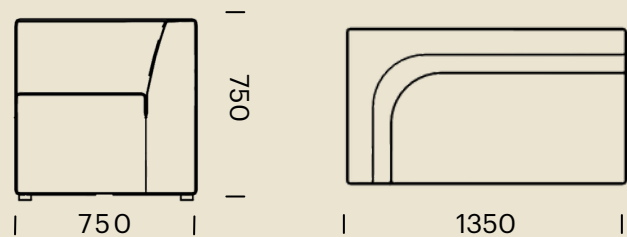
FLX-SB-2SLR



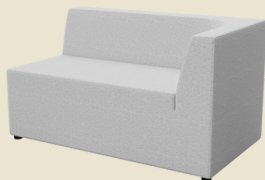
2 Seater with Left Arm



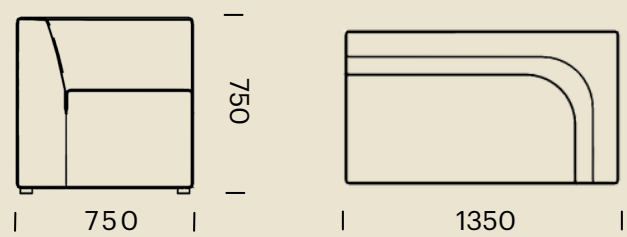
FLX-SB-2SL



2 Seater with Right Arm

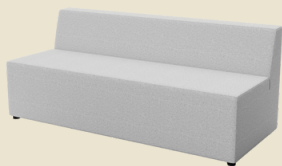


FLX-SB-2SR

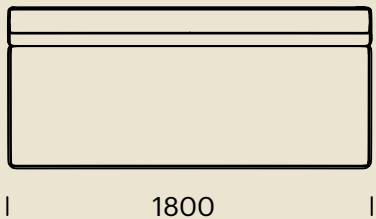


**DIMENSIONS (MM) -
FLIX STANDARD BACK**

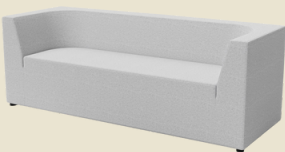
3 Seater Straight



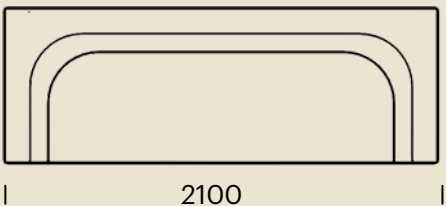
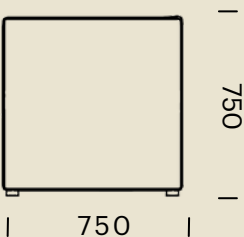
FLX-SB-3SST



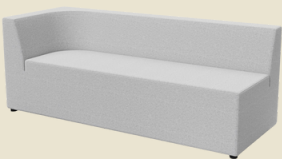
3 Seater with Left & Right Arms



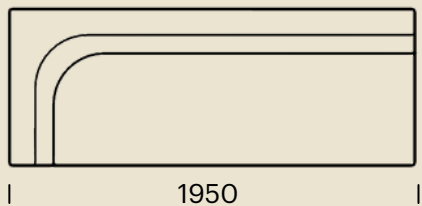
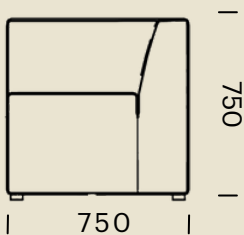
FLX-SB-3SLR



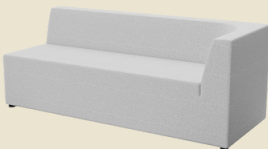
3 Seater with Left Arm



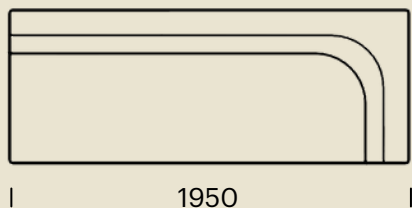
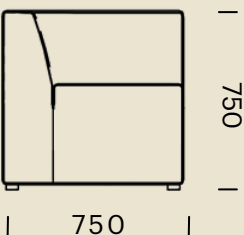
FLX-SB-3SL



3 Seater with Right Arm



FLX-SB-3SR

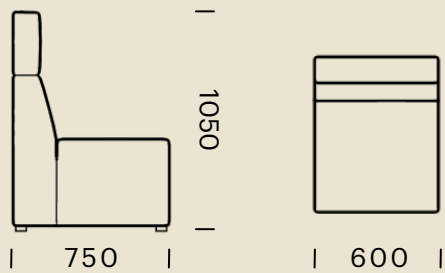


DIMENSIONS (MM) -
FLIX MEDIUM BACK

1 Seater Straight



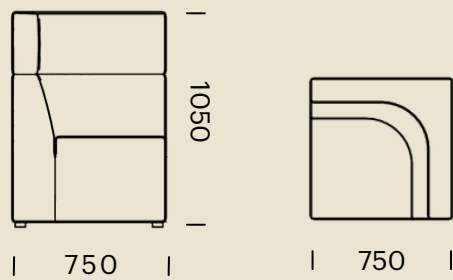
FLX-MB-1SST



90 Degree Corner



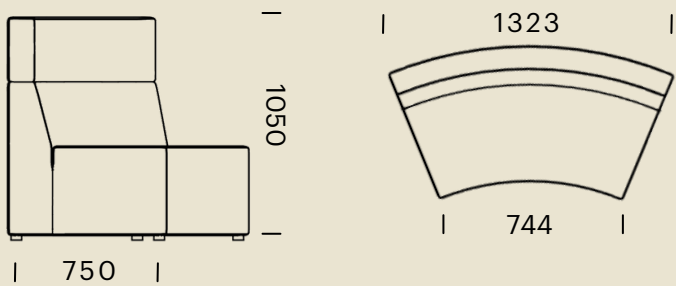
FLX-MB-CNR



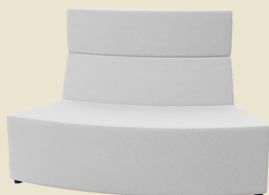
45 Degree Concave



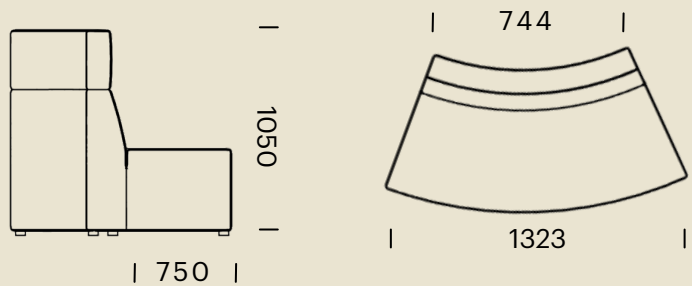
FLX-MB-45CAV



45 Degree Convex



FLX-MB-45CVX

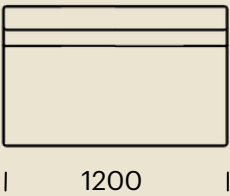
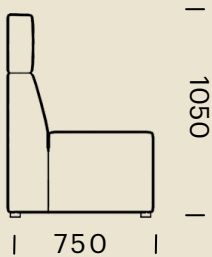


**DIMENSIONS (MM) -
FLIX MEDIUM BACK**

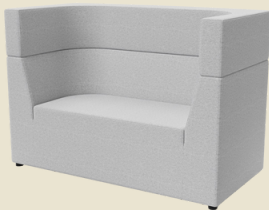
2 Seater Straight



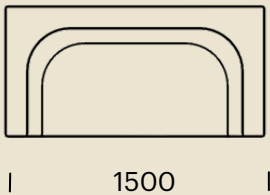
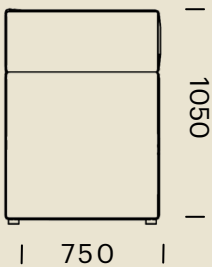
FLX-MB-2SST



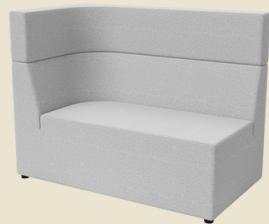
2 Seater with Left & Right Returns



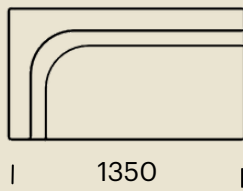
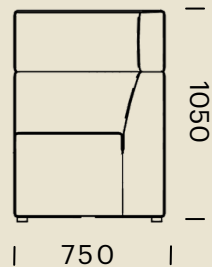
FLX-MB-2SLR



2 Seater with Left Return



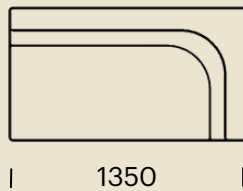
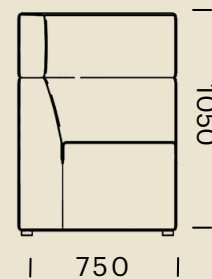
FLX-MB-2SL



2 Seater with Right Return

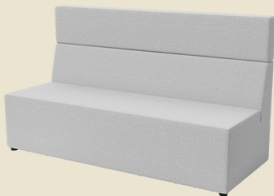


FLX-MB-2SR

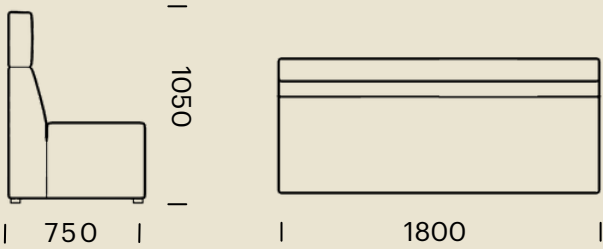


**DIMENSIONS (MM) -
FLIX MEDIUM BACK**

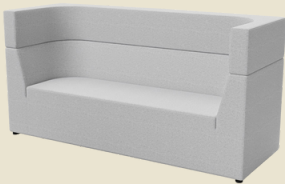
3 Seater Straight



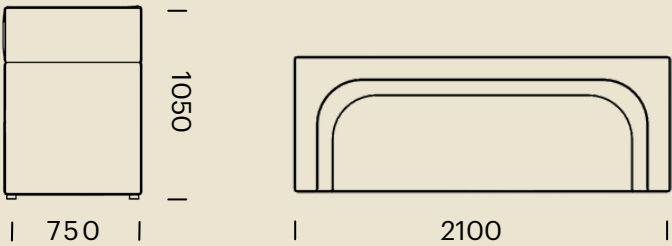
FLX-MB-3SST



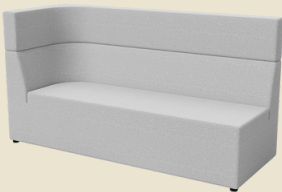
3 Seater with Left & Right Returns



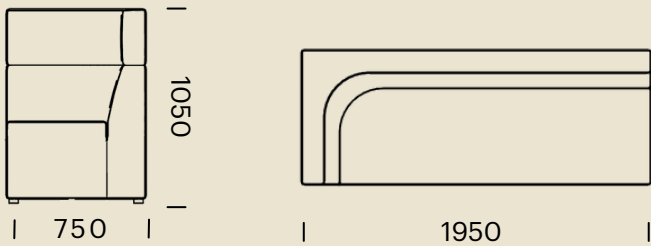
FLX-MB-3SLR



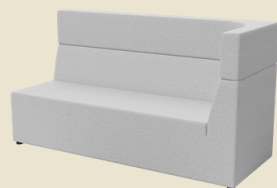
3 Seater with Left Return



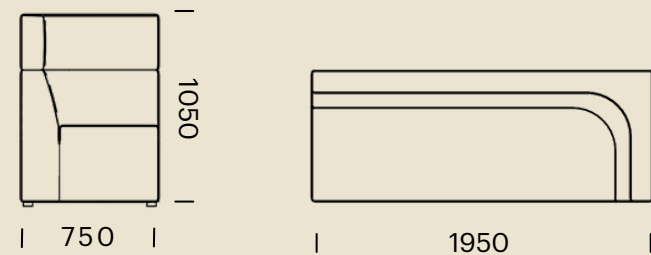
FLX-MB-3SL



3 Seater with Right Return

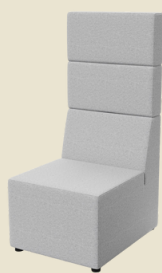


FLX-MB-3SR

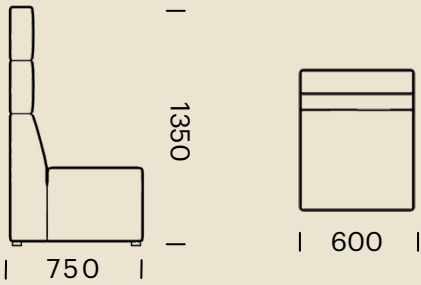


DIMENSIONS (MM) -
FLIX TALL BACK

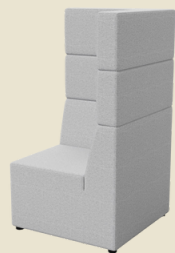
1 Seater Straight



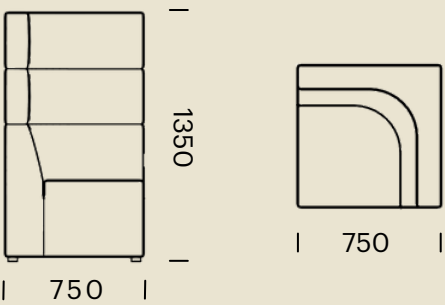
FLX-TB-1SST



90 Degree Corner



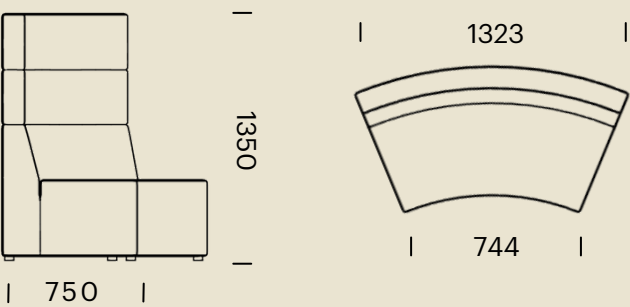
FLX-TB-CNR



45 Degree Concave



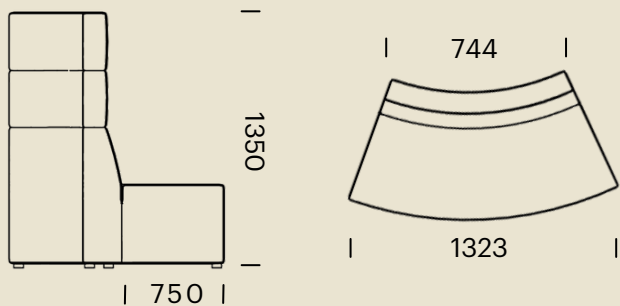
FLX-TB-45CAV



45 Degree Convex

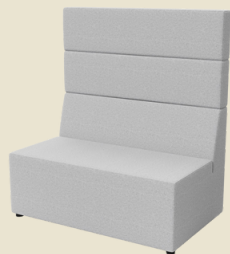


FLX-TB-45CVX

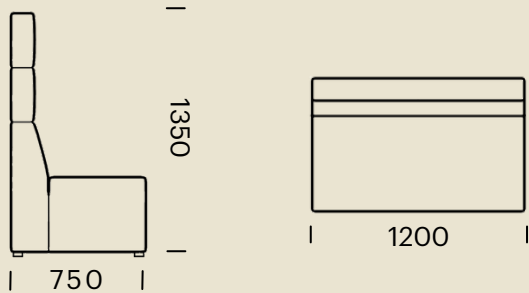


**DIMENSIONS (MM) -
FLIX TALL BACK**

2 Seater Straight



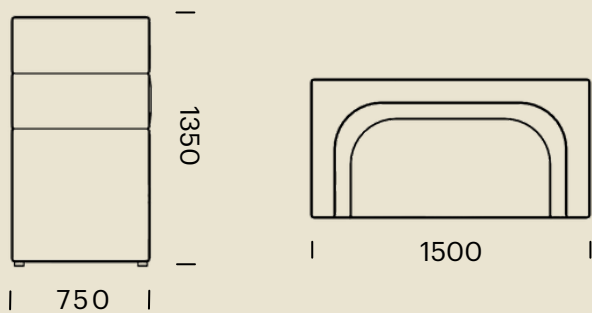
FLX-TB-2SST



2 Seater with Left & Right Returns



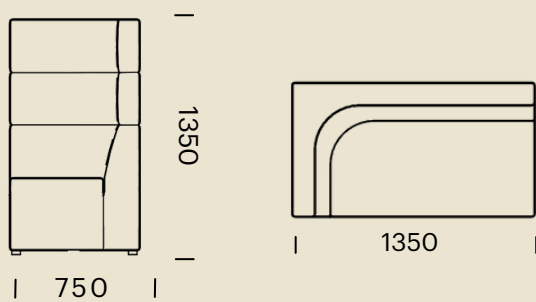
FLX-TB-2SLR



2 Seater with Left Return



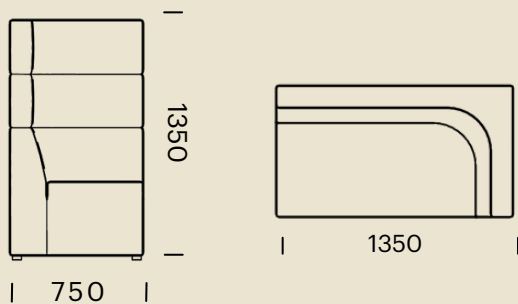
FLX-TB-2SL



2 Seater with Right Return



FLX-TB-2SR

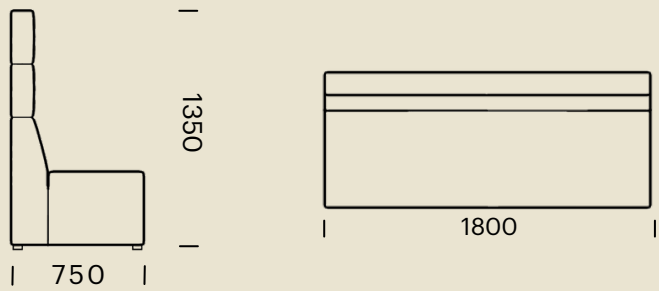


**DIMENSIONS (MM) -
FLIX TALL BACK**

3 Seater Straight



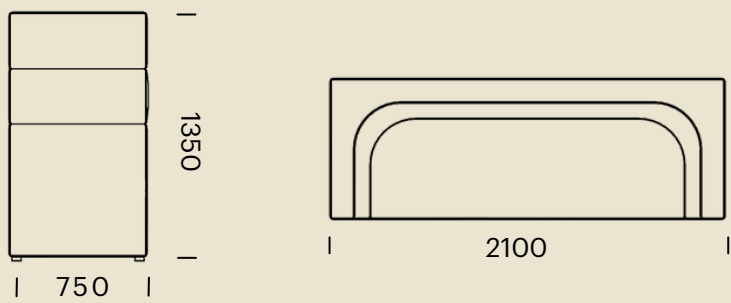
FLX-TB-3SST



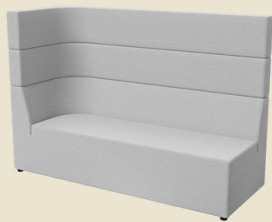
3 Seater with Left & Right Returns



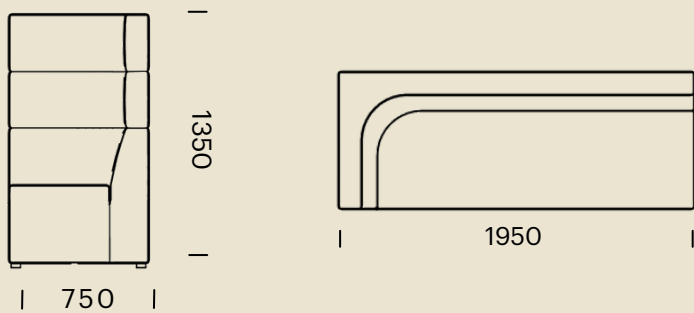
FLX-TB-3SLR



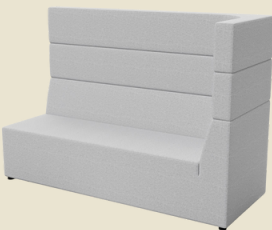
3 Seater with Left Return



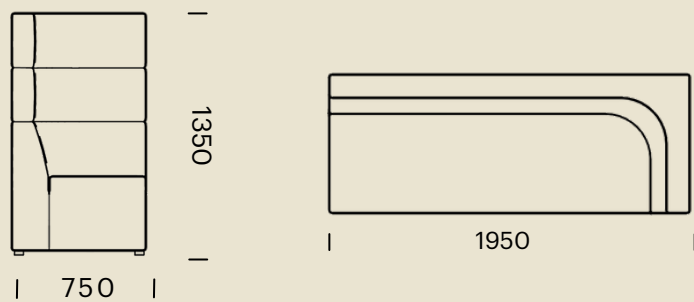
FLX-TB-3SL



3 Seater with Right Return

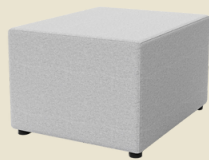


FLX-TB-3SR

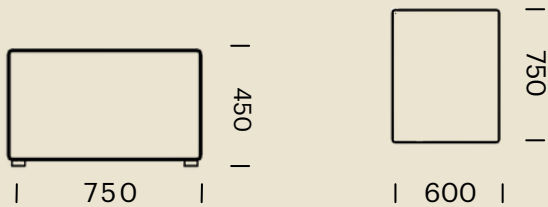


DIMENSIONS (MM) -
FLIX OTTOMANS

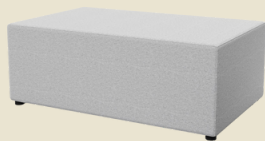
Ottoman 1 Seater Straight



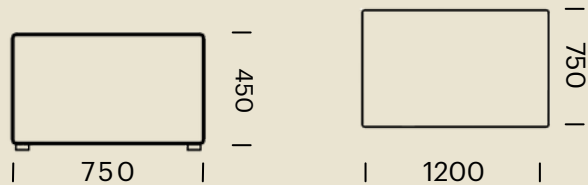
FLX-OTT-1SST



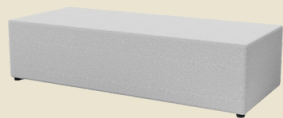
Ottoman 2 Seater Straight



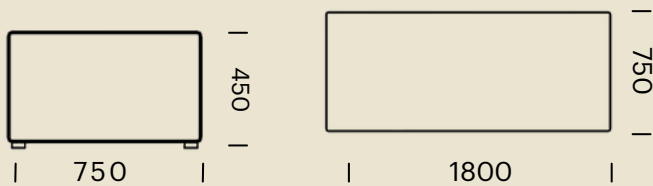
FLX-OTT-2SST



Ottoman 3 Seater Straight



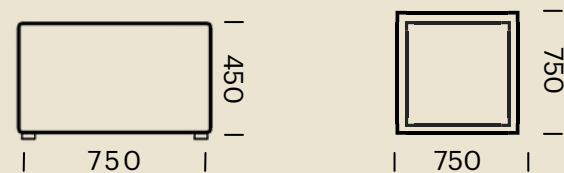
FLX-OTT-3SST



Square with Tabletop



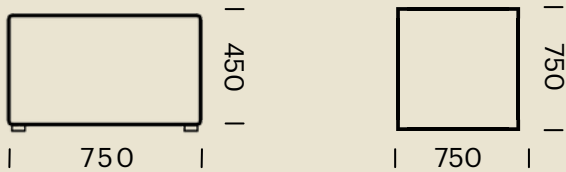
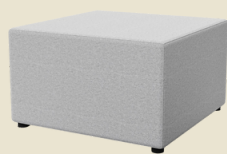
FLX-OTT-SQTT



DIMENSIONS (MM) -
FLIX OTTOMANS

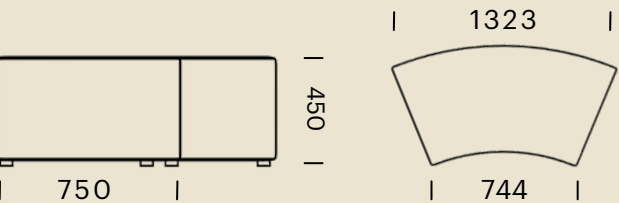
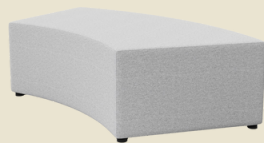
Ottoman 90 Degree Corner

FLX-OTT-CNR



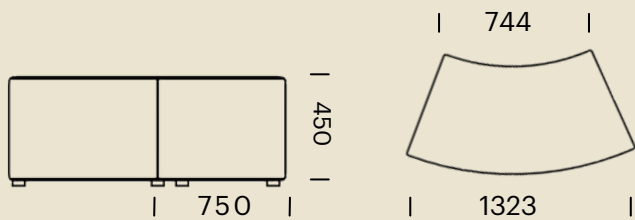
Ottoman 45 Degree Concave

FLX-OTT-45CAV



Ottoman 45 Degree Convex

FLX-OTT-45CVX



OPTIONS

Rear Bench 45 Degree
Convex Tall Back



FLX-OPT-RB45CVX

- Option for Tall Back only
- 25mm Thickness, 300mm depth
- Placed at 1050mm Height

Finishes: House Laminates Range CAT A / B

Rear Bench 45 Degree
Concave Tall Back



FLX-OPT-RB45CAV

- Option for Tall Back only
- 25mm Thickness, 300mm depth
- Placed at 1050mm Height

Finishes: House Laminates Range CAT A / B

Rear Bench Straight Tall Back



FLX-OPT-RB600S

- Option for Tall Back only
- 25mm Thickness, 300mm depth
- Placed at 1050mm Height

Finishes: House Laminates Range CAT A / B

GPO Unit Front or Rear



FLX-OPT-PWR-F - Option add power to front
FLX-OPT-PWR-R - Option add power to rear

- White or Black

Leads to power source may be visible depending on location.
Floorbox not supplied by Burgtec.



Care and Maintenance

Fabric

For a general clean, regular dusting and vacuuming removes any loose particles and stops dirt from entering the weave and breaking down the fibres. When necessary, the upholstery should be gently wiped with a clean cloth, dampened with warm soapy water. Immediately dry with a clean and dry non-abrasive cloth. Do not use strong or abrasive cleaning fluids or detergents, as these may affect the colour and finish of the fabric. Upholstery can be professionally dry-cleaned if required. For best care and maintenance results please follow manufacturer's instructions

Leather, Vinyl, PU & Faux Leather

Periodically dust with a clean, dry soft cloth. Do not expose your Chairs to prolonged Sunlight or other heat sources as this may cause fading. Avoid extremes of Humidity. For Dried Soiling: Gently brush with a soft brush or gently clean with a vacuum cleaner. For Wet Soiling and deep cleaning: Gently remove the excess substance from the surface with absorbent paper. With a clean cloth soaked in a mild soap solution, gently remove the stain. Do not soak the surface, dry and buff immediately with a clean cloth. For best care and maintenance results please follow manufacturer's instructions.

Chrome, Anodised, Polished or Powdercoated Metal Surfaces

Clean with a damp, soft cloth or sponge using lukewarm soapy water. Strong detergents which contain bleach, acid or have an abrasive effect (such as scouring creams) should be avoided. Sponges and scourers made from synthetic fibres or metal which may leave permanent scratches on the surfaces should also be avoided. Ensure product is dried with clean fibre-free cloth after washing.

Warranty Information

Flix Lounges have a 10 Year Warranty. Burgtec promises the original purchaser, at our option, to repair or replace any of the said product or component thereof, subject to normal commercial use, that is defective in material or workmanship for the time period offered on the product from date of purchase. To view the full warranty statement for Flix please go to burgtec.com/flix.



Sydney
Canberra
Melbourne
Brisbane
Newcastle
Perth

