

Korus

Modular Lounge



burgtec.

Built for comfort.

The Korus collection combines commercial-grade quality with that 'sink-into-it' softness for ultimate comfort.

Korus Lounges can be arranged in any configuration with their functional modular design, bringing an effortless elegance to any space.

Features

- Made in Australia
- Modular lounge system
- Available in ottoman & standard back
- Available in corner & straight modules
- Rounded, organic design

Finishes

- Select from Burgtec house fabrics /leathers or fabric of your choice
- Two-tone upholstery available
- Feature stitching detail

DISTINCTIVELY TACTILE

Simplicity is the key to the extraordinary flexibility of the Korus range.

Individual modules can be arranged together in so many diverse configurations time and again, bringing a refreshing versatility to the corporate workspace.

The flexibility, longevity and aesthetics of the Korus create the perfect relaxation zone.



LOCAL FINISHES

Burgtec's wide range of local house fabrics are available with no extra lead time.

With hundreds of possible combinations, Korus soft seating can be perfectly coordinated with its environment, without the worry of possible supply chain delays.



LOCAL MANUFACTURING

Burgtec is serious about manufacturing furniture here in Australia using locally sourced materials. It just makes sense in order to provide world-class furniture with quicker lead times and true sustainability.

Designed and Manufactured in Australia the Korus lounges are available within a 4-6 week lead time.

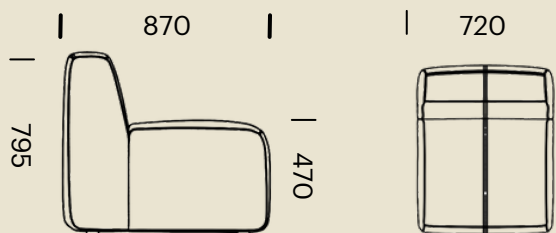


DIMENSIONS (MM) - KORUS LOUNGE MODULES

1 Seater Straight



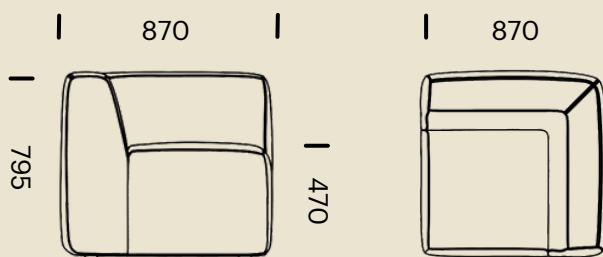
KOR-SB-1SST



90 Degree Corner



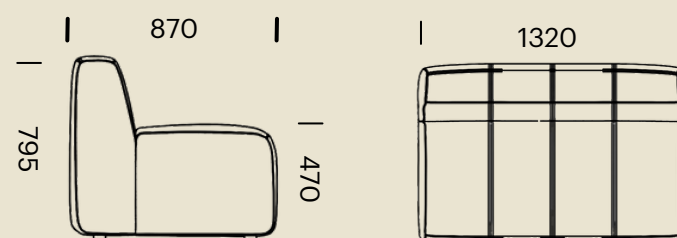
KOR-SB-CNR



2 Seater Straight



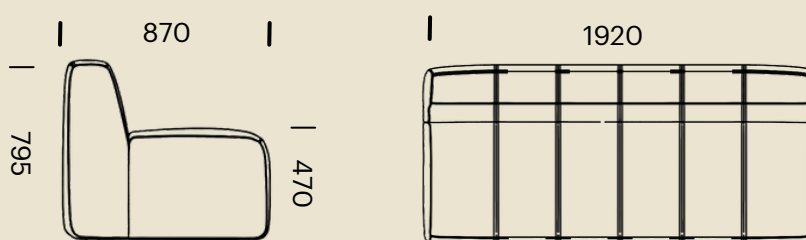
KOR-SB-2SST



3 Seater Straight



KOR-SB-3SST

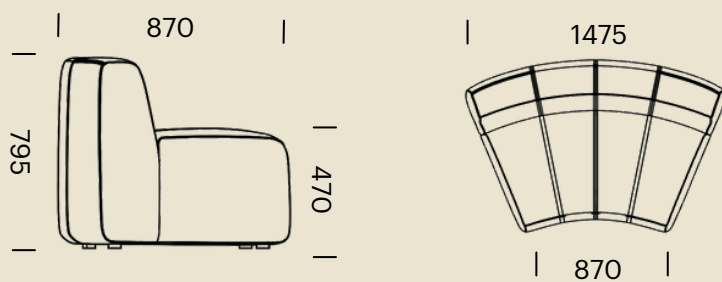


DIMENSIONS (MM) - KORUS MODULAR LOUNGE

45 Degree Curve Concave



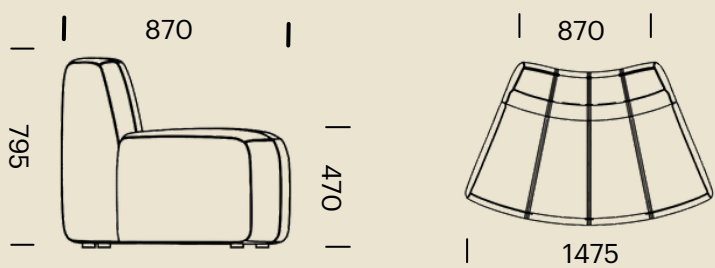
KOR-SB-45CAV



45 Degree Curve Convex

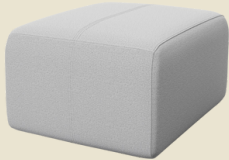


KOR-SB-45CVX

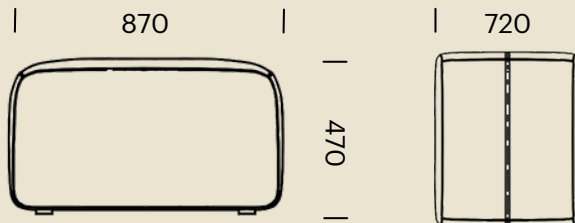


DIMENSIONS (MM) - KORUS OTTOMANS

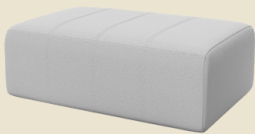
1 Seater Straight Ottoman



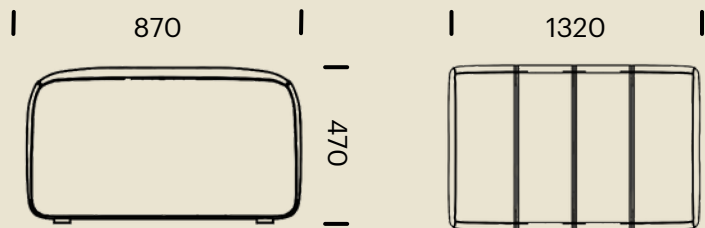
KOR-OTT-1SST



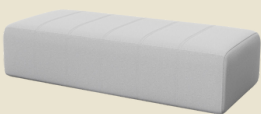
2 Seater Straight Ottoman



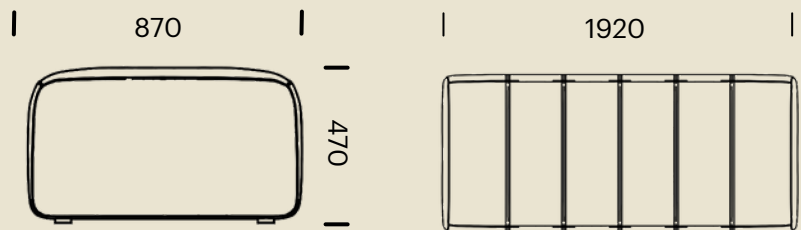
KOR-SB-2SST



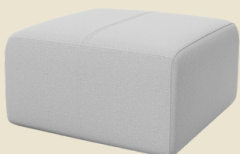
3 Seater Straight Ottoman



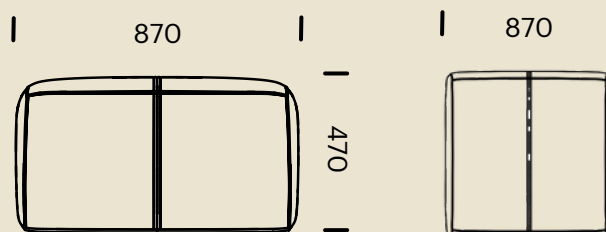
KOR-OTT-3SST



Square Ottoman

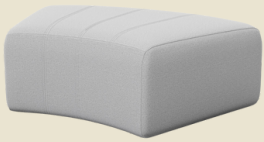


KOR-OTT-SQ

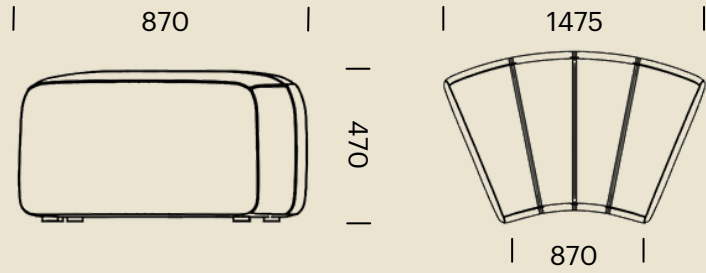


DIMENSIONS (MM) - KORUS OTTOMANS

45 Degree Concave Ottoman



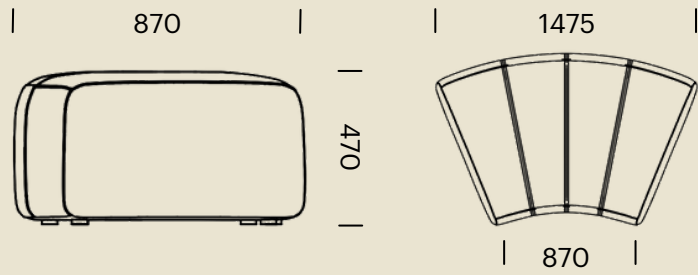
KOR-OTT-45CAV



45 Degree Convex Ottoman



KOR-OTT-45CVX



Care and Maintenance

Fabric

For a general clean, regular dusting and vacuuming removes any loose particles and stops dirt from entering the weave and breaking down the fibres. When necessary, the upholstery should be gently wiped with a clean cloth, dampened with warm soapy water. Immediately dry with a clean and dry non-abrasive cloth. Do not use strong or abrasive cleaning fluids or detergents, as these may affect the colour and finish of the fabric. Upholstery can be professionally dry-cleaned if required. For best care and maintenance results please follow manufacturer's instructions

Leather

Periodically dust with a clean, dry soft cloth. Do not expose your Chairs to prolonged Sunlight or other heat sources as this may cause fading. Avoid extremes of Humidity. For Dried Soiling: Gently brush with a soft brush or gently clean with a vacuum cleaner. For Wet Soiling and deep cleaning: Gently remove the excess substance from the surface with absorbent paper. With a clean cloth soaked in a mild soap solution, gently remove the stain. Do not soak the surface, dry and buff immediately with a clean cloth. For best care and maintenance results please follow manufacturer's instructions.

Vinyl, PU & Faux Leather

Periodically dust with a clean, dry soft cloth. Do not expose your Chairs to prolonged Sunlight or other heat sources as this may cause fading. Avoid extremes of Humidity. For Dried Soiling: Gently brush with a soft brush or gently clean with a vacuum cleaner. For Wet Soiling and deep cleaning: Gently remove the excess substance from the surface with absorbent paper. With a clean cloth soaked in a mild soap solution, gently remove the stain. Do not soak the surface, dry and buff immediately with a clean cloth. For best care and maintenance results please follow manufacturer's instructions.

Warranty Information

Korus Lounges have a 10 Year Warranty. Burgtec promises the original purchaser, at our option, to repair or replace any of the said product or component thereof, subject to normal commercial use, that is defective in material or workmanship for the time period offered on the product from date of purchase. To view the full warranty statement for Korus please go to burgtec.com/korus.





Sydney
Canberra
Melbourne
Brisbane
Newcastle
Perth

