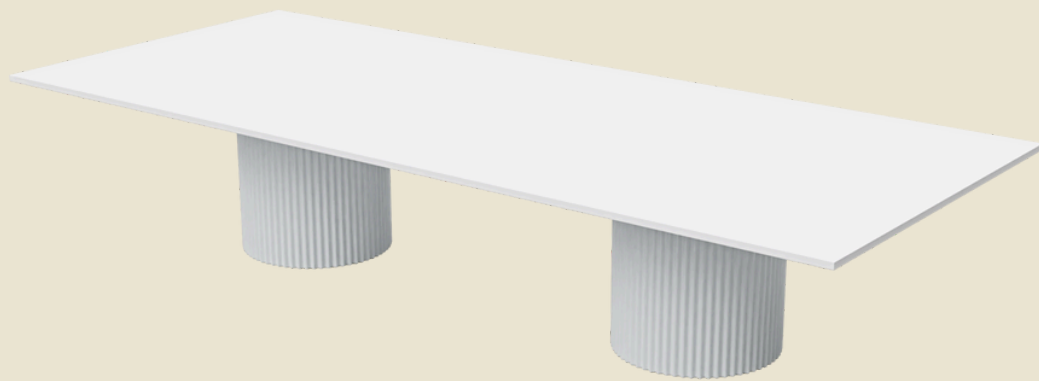


# Ripple

## Tables



**burgtec.**

## A boardroom icon.

Defined by its striking ripple cylinder base, the Ripple table collection enhances any interior through texture and finishes.

Ripple is available in standard, bar, kitchen, coffee and side table heights to suit large boardrooms, small meeting rooms, lunchrooms or breakout areas alike.

With power and cable management solutions available for all heights and an endless array of finishes, all within the prompt Burgtec lead time, Ripple is the definition of artistic versatility.

## Features

- Cylindrical steel base design with corrugated surface
- Available in 6 types: Standard, Meeting (double base), Counter, Bar, Coffee and Side tables
- Optional Power / Cable Management accessories
- Made in Australia
- 10 year warranty

## Finishes

- Steel Base: Black or White or select from Burgtec house metal coatings (extended lead times)
- Tabletop: Select from Burgtec house laminates (Contrast edging available)
- Coffee & Side Tabletops: Black or White steel or select from Burgtec house laminates

## CUSTOMISED SOLUTIONS

The Ripple range answers to just about every table requirement.

Its adaptability and strength comes from the hollow cylindrical drum structure, available in every height of commercial table: standard meeting height, counter height, bar height and coffee or side table height, as a single drum or double drum base.

Starting from the set of standard options, and customising the size, shape, finishes and accessories, every Ripple design is unique to each project.



## **LOCAL MANUFACTURING**

Ripple was designed in Australia,  
to be made in Australia.

Burgtec is serious about manufacturing  
furniture here in Australia using locally sourced  
materials. It just makes sense in order to  
produce world-class furniture with quicker lead  
times and true sustainability.

From melamine tops to the fabricated steel  
drum bases, Ripple is 100% a product of  
Australia.

## LOCAL FINISHES

Burgtec's wide range of local house finishes are available with no extra lead time.

With hundreds of combinations in laminate top colours and drum base metal coatings, each Ripple table can be perfectly cohesive with its environment, without the worry of possible supply chain delays.



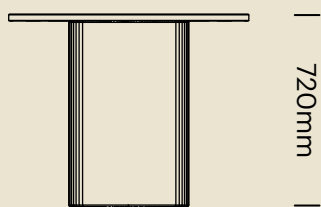
## DIMENSIONS - STANDARD ROUND TABLES

---

450 Base

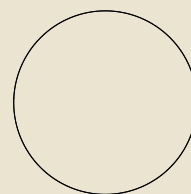


RIPPLE-720H-RD-800-900



| 450 mm |

720mm



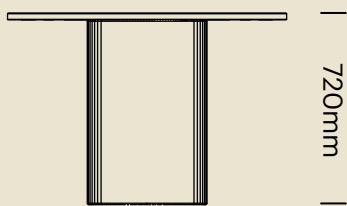
| 800 - 900  
mm |

---

450 Base

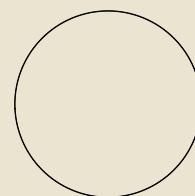


RIPPLE-720H-RD-900-1050



| 450 mm |

720mm



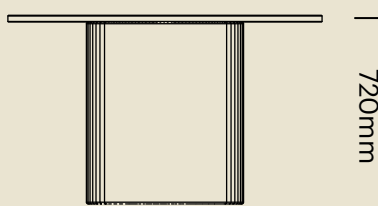
| 900 -  
1050mm |

---

600 Base

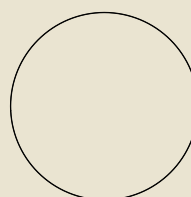


RIPPLE-720H-RD-1050-1200



| 600 mm |

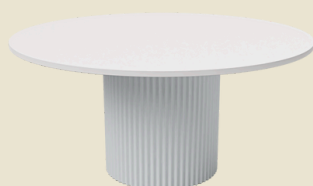
720mm



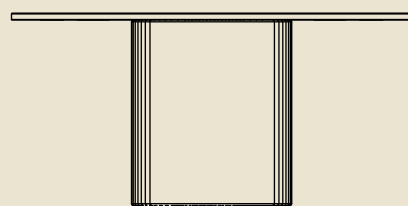
| 1050 -  
1200mm |

---

600 Base

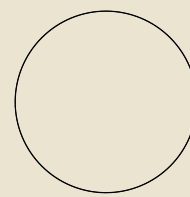


RIPPLE-720H-RD-1200-1500



| 600 mm |

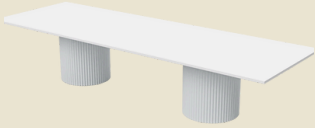
720mm



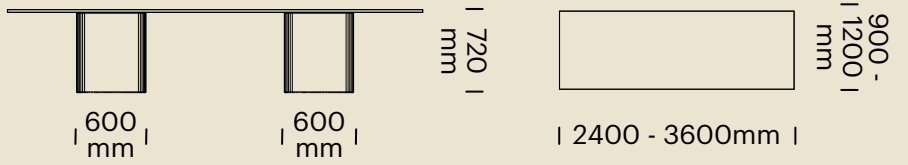
| 1200 -  
1500mm |

# DIMENSIONS - RECTANGLE MEETING TABLES

2x 600 Base



RIPPLE-720H-REC12-24-36

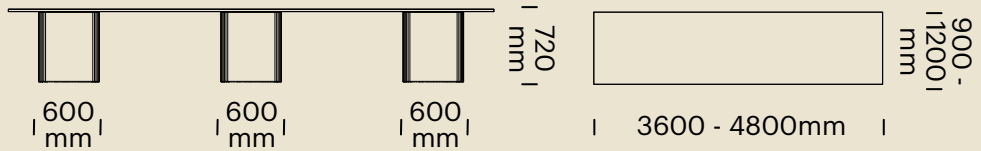


Note: 2-Piece Top (excluding 2400W)

3x 600 Base



RIPPLE-720H-REC12-36-48

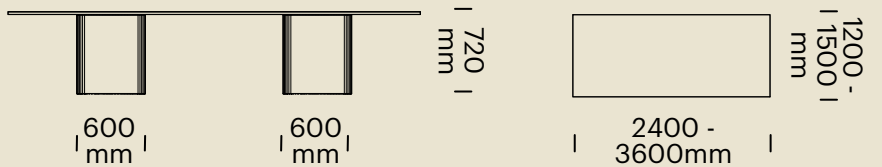


Note: 2-Piece Top

2x 600 Base

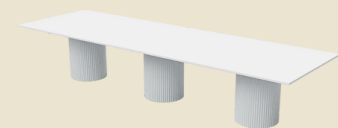


RIPPLE-720H-REC15-24-36

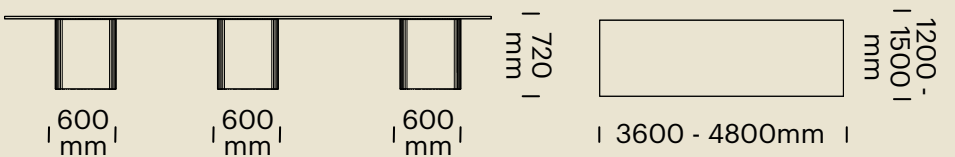


Note: 2-Piece Top (excluding 2400W)

3x 600 Base



RIPPLE-720H-REC15-36-48



Note: 2-Piece Top

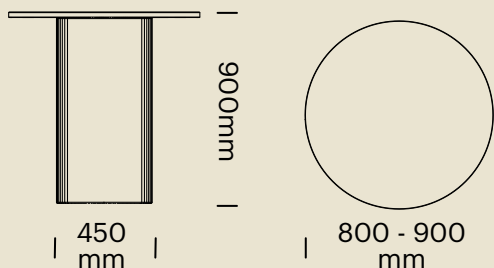


# DIMENSIONS - ROUND COUNTER TABLES

450 Base



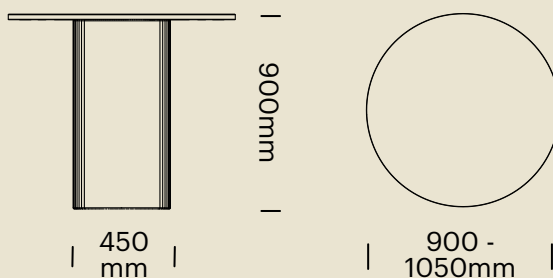
RIPPLE-900H-RD-800-900



450 Base



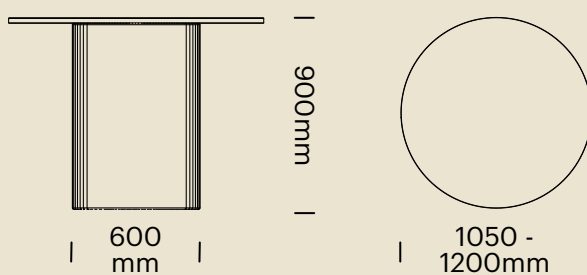
RIPPLE-900H-RD-900-1050



600 Base



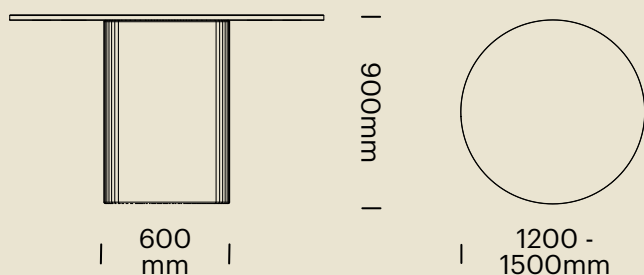
RIPPLE-900H-RD-1050-1200



600 Base

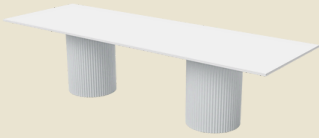


RIPPLE-900H-RD-1200-1500

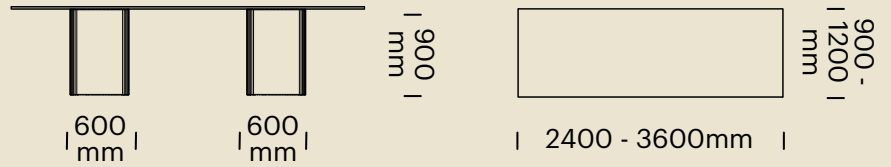


# DIMENSIONS - RECTANGLE COUNTER TABLES

2x 600 Base

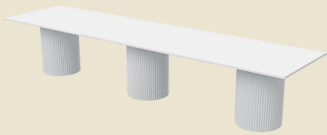


RIPPLE-900H-REC12-24-36

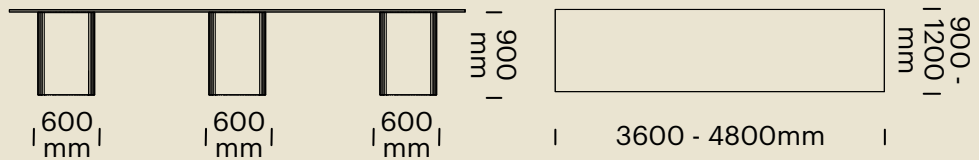


Note: 2-Piece Top (excluding 2400W)

3x 600 Base

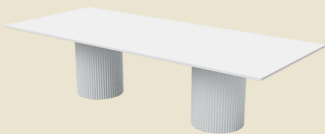


RIPPLE-900H-REC12-36-48

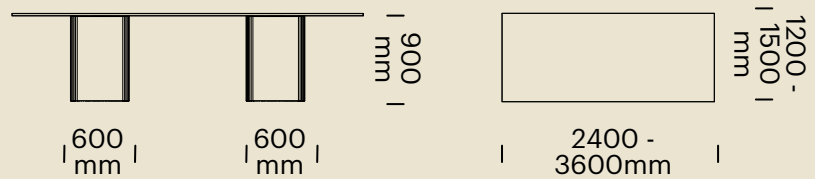


Note: 2-Piece Top

2x 600 Base

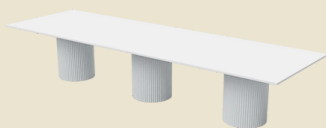


RIPPLE-900H-REC15-24-36

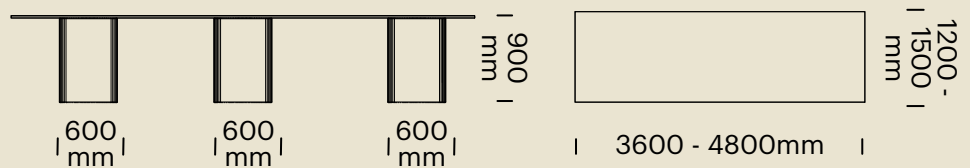


Note: 2-Piece Top (excluding 2400W)

3x 600 Base



RIPPLE-900H-REC15-36-48



Note: 2-Piece Top

## DIMENSIONS - ROUND BAR TABLES

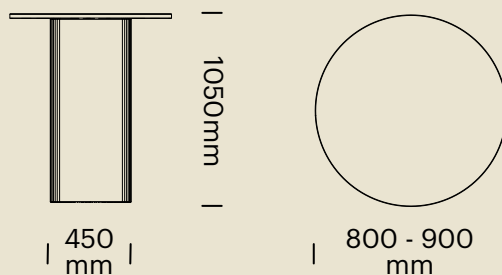
---

450 Base



---

RIPPLE-1050H-RD-800-900



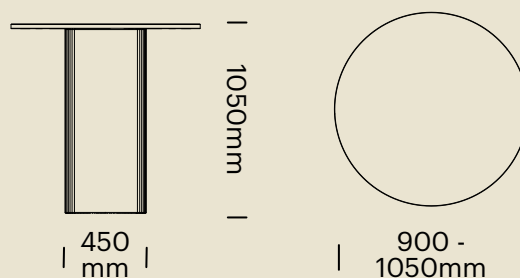
---

450 Base



---

RIPPLE-1050H-RD-900-1050



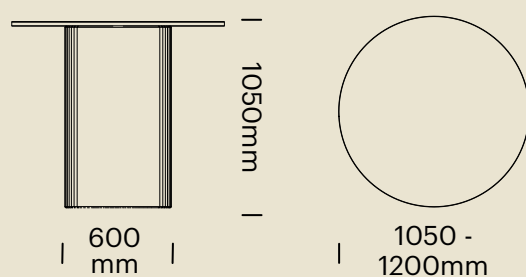
---

600 Base



---

RIPPLE-1050H-RD-1050-1200

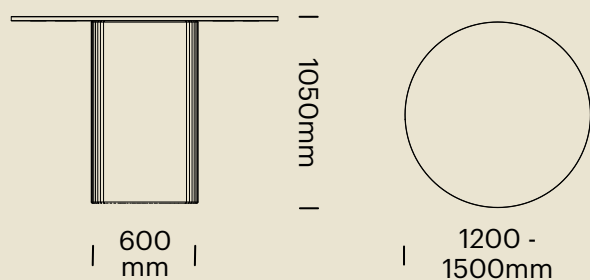


---

600 Base

---

RIPPLE-1050H-RD-1200-1500

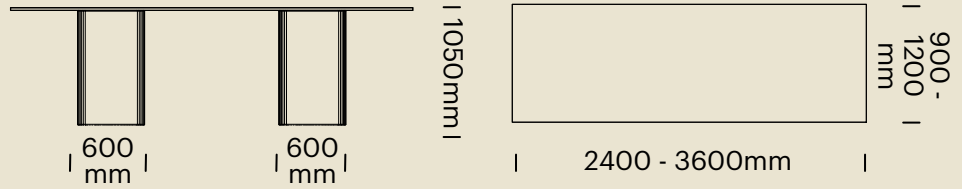


# DIMENSIONS - RECTANGLE BAR TABLES

2x 600 Base



RIPPLE-1050H-REC12-24-36

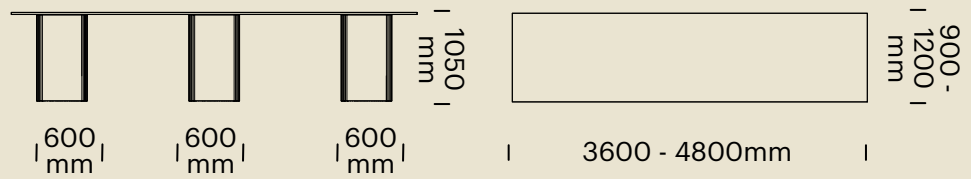


Note: 2-Piece Top (excluding 2400W)

3x 600 Base



RIPPLE-1050H-REC12-36-48

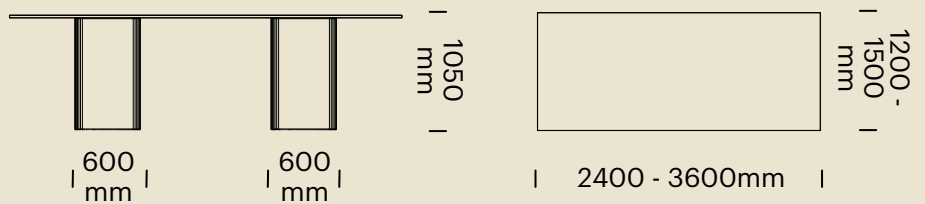


Note: 2-Piece Top

2x 600 Base

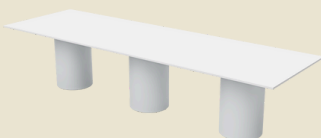


RIPPLE-1050H-REC15-24-36

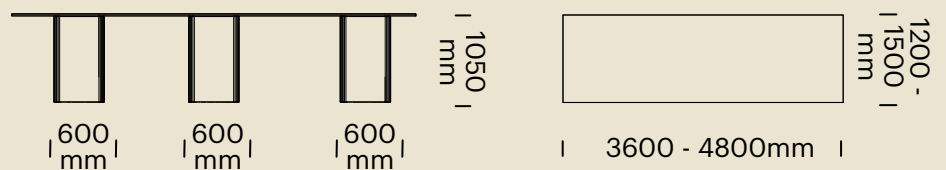


Note: 2-Piece Top (excluding 2400W)

3x 600 Base



RIPPLE-1050H-REC15-36-48



Note: 2-Piece Top

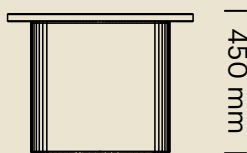
## DIMENSIONS - COFFEE TABLES

---

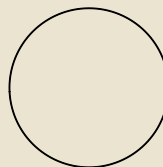
### 350 Base



RIPPLE-450H-RD-600



| 350mm |



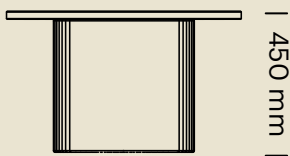
| 600 mm |

---

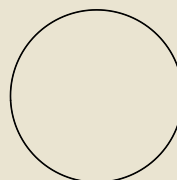
### 400 Base



RIPPLE-450H-RD-750



| 400mm |



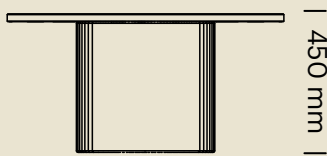
| 750mm |

---

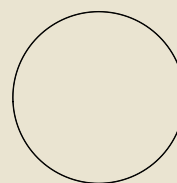
### 400 Base



RIPPLE-450H-RD-900



| 400mm |



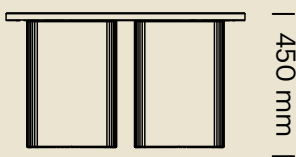
| 900mm |

---

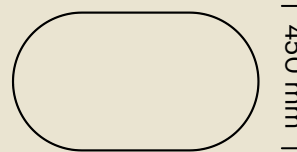
### 2 x 350 Bases



RIPPLE-450H-DEND-800-450



| 350 mm | | 350 mm |



| 800mm |

| 450 mm |

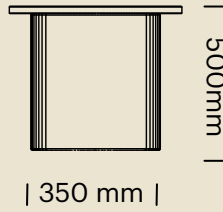
## DIMENSIONS - SIDE TABLES

---

### 350 Base



RIPPLE-500H-RD-450

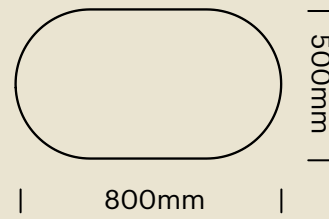
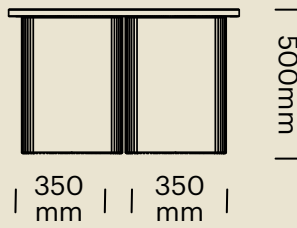


---

### 2 x 350 Bases



RIPPLE-500H-DEND-800-500



## ACCESSORIES

---

### Powerbox



---

### Accede Dual

- Brand: CMS Electracom
- Colour: Black, White or Silver
- Mounting: Recessed (Into Top)
- Includes lead with 3-pin plug

(Floorbox Required - By Others)

---

### Powerbox



---

### Executive II

- Brand: CMS Electracom
- Colour: To match laminate tabletop
- Mounting: Recessed (Into Top)
- Includes lead with 3-pin plug

(Floorbox Required - By Others)

# Care and Maintenance

## Laminate Surfaces

Clean with a damp, soft cloth or sponge using lukewarm water. Neutral diluted detergent may also be used with lukewarm water. Strong detergents which contain bleach, acid or have an abrasive effect (such as scouring creams) should be avoided.

## Chrome, Anodised, Polished or Powdercoated Metal Surfaces

Clean with a damp, soft cloth or sponge using lukewarm soapy water. Strong detergents which contain bleach, acid or have an abrasive effect (such as scouring creams) should be avoided. Sponges and scourers made from synthetic fibres or metal which may leave permanent scratches on the surfaces should also be avoided. Ensure product is dried with clean fibre- free cloth after washing.

## Timber Surfaces

Clean with a damp, soft cloth or sponge using lukewarm water. Neutral diluted detergent may also be used with lukewarm water. Strong detergents which contain bleach, acid or have an abrasive effect (such as scouring creams) should be avoided.

## Warranty Information

Kanon Tables have a 10 Year Warranty. Burgtec promises the original purchaser, at our option, to repair or replace any of the said product or component thereof, subject to normal commercial use, that is defective in material or workmanship for the time period offered on the product from date of purchase. To view the full warranty statement for Kanon please go to [burgtec.com/kanon](http://burgtec.com/kanon).







Sydney  
Canberra  
Melbourne  
Brisbane  
Newcastle  
Perth

