

burgtec

Ultimet Storage

Safe keeping



Ultimet Storage

Safe keeping

Ultimet metal storage provide the ideal balance between design and functionality. The comprehensive range is suitable for many applications in the workplace. Contemporary, classy and robust, the Ultimet family are engineered to keep your effects secure while being easily relocatable.

Features	Metal construction Fully locking with standard key lock Locking castors (caddy units & pedestals) Adjustable shelf in caddy and tambour units Caddy handing: is generally determined by the caddy's intended desk position, which would match the side the drawers sit. The door is always positioned under the desk and the drawers in front for easy access. *Plants not included with planter
Finishes	Black or White Powdercoat (caddy only available in white)
Warranty	10 Years
Lead time	4 weeks



Ultimet Storage

Safe keeping

**Ultimet Storage - Sliding
Doors - 1000H x 900W - Core
Powdercoat**



ULTC-SD-10H-09W-COR

Depth 450mm
Height 1000mm
Width 900mm

**Ultimet Storage - Sliding
Doors - 1000H x 900W -
Curated Powdercoat**



ULTC-SD-10H-09W-CUR

Depth 450mm
Height 1000mm
Width 900mm

**Ultimet Storage - Sliding
Doors - 1000H x 1200W -
Core Powdercoat**



ULTC-SD-10H-12W-COR

Depth 450mm
Height 1000mm
Width 1200mm

**Ultimet Storage - Sliding
Doors - 1000H x 1200W -
Curated Powdercoat**



ULTC-SD-10H-12W-CUR

Depth 450mm
Height 1000mm
Width 1200mm

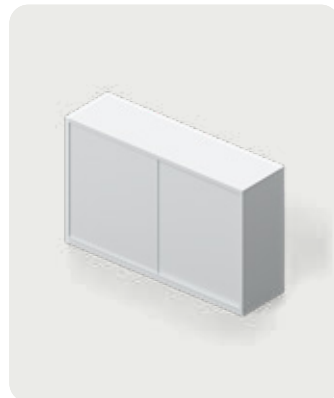
**Ultimet Storage - Sliding
Doors - 1000H x 1600W -
Core Powdercoat**



ULTC-SD-10H-16W-COR

Depth 450mm
Height 1000mm
Width 1600mm

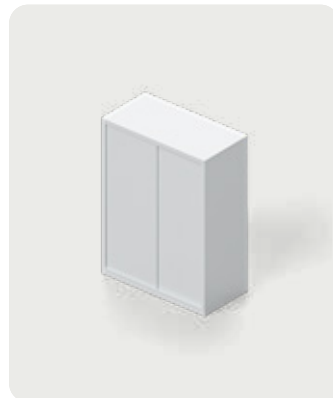
**Ultimet Storage - Sliding
Doors - 1000H x 1600W -
Curated Powdercoat**



ULTC-SD-10H-16W-CUR

Depth 450mm
Height 1000mm
Width 1600mm

**Ultimet Storage - Sliding
Doors - 1200H x 900W - Core
Powdercoat**



ULTC-SD-12H-09W-COR

Depth 450mm
Height 1200mm
Width 900mm

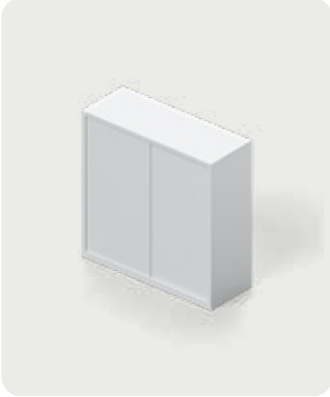
**Ultimet Storage - Sliding
Doors - 1200H x 900W -
Curated Powdercoat**



ULTC-SD-12H-09W-CUR

Depth 450mm
Height 1200mm
Width 900mm

Ultimet Storage - Sliding Doors - 1200H x 1200W - Core Powdercoat



ULTC-SD-12H-12W-COR

Depth 450mm
Height 1200mm
Width 1200mm

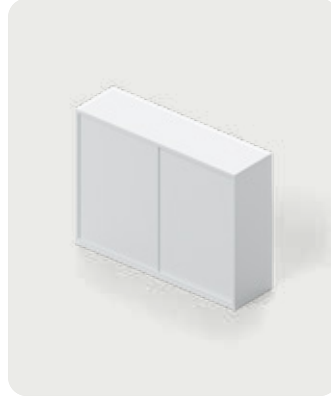
Ultimet Storage - Sliding Doors - 1200H x 1200W - Curated Powdercoat



ULTC-SD-12H-12W-CUR

Depth 450mm
Height 1200mm
Width 1200mm

Ultimet Storage - Sliding Doors - 1200H x 1600W - Core Powdercoat



ULTC-SD-12H-16W-COR

Depth 450mm
Height 1200mm
Width 1600mm

Ultimet Storage - Sliding Doors - 1200H x 1600W - Curated Powdercoat



ULTC-SD-12H-16W-CUR

Depth 450mm
Height 1200mm
Width 1600mm

Ultimet Storage - Tambour Doors - 1000H x 900W - Core Powdercoat



ULTC-TD-10H-09W-COR

Depth 450mm
Height 1000mm
Width 900mm

Ultimet Storage - Tambour Doors - 1000H x 900W - Curated Powdercoat



ULTC-TD-10H-09W-CUR

Depth 450mm
Height 1000mm
Width 900mm

Ultimet Storage - Tambour Doors - 1000H x 1200W - Core Powdercoat



ULTC-TD-10H-12W-COR

Depth 450mm
Height 1000mm
Width 1200mm

Ultimet Storage - Tambour Doors - 1000H x 1200W - Curated Powdercoat



ULTC-TD-10H-12W-CUR

Depth 450mm
Height 1000mm
Width 1200mm

Ultimet Storage

Safe keeping

**Ultimet Storage - Tambour
Doors - 1000H x 1600W -
Core Powdercoat**



ULTC-TD-10H-16W-COR

Depth 450mm
Height 1000mm
Width 1600mm

**Ultimet Storage - Tambour
Doors - 1000H x 1600W -
Curated Powdercoat**



ULTC-TD-10H-16W-CUR

Depth 450mm
Height 1000mm
Width 1600mm

**Ultimet Storage - Tambour
Doors - 1200H x 900W - Core
Powdercoat**



ULTC-TD-12H-09W-COR

Depth 450mm
Height 1200mm
Width 900mm

**Ultimet Storage - Tambour
Doors - 1200H x 900W -
Curated Powdercoat**



ULTC-TD-12H-09W-CUR

Depth 450mm
Height 1200mm
Width 900mm

**Ultimet Storage - Tambour
Doors - 1200H x 1200W -
Core Powdercoat**



ULTC-TD-12H-12W-COR

Depth 450mm
Height 1200mm
Width 1200mm

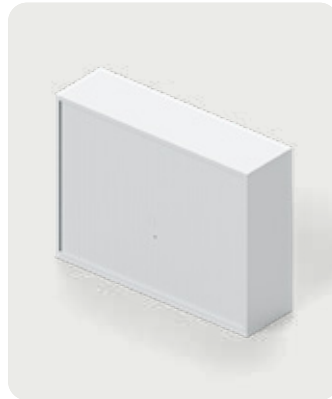
**Ultimet Storage - Tambour
Doors - 1200H x 1200W -
Curated Powdercoat**



ULTC-TD-12H-12W-CUR

Depth 450mm
Height 1200mm
Width 1200mm

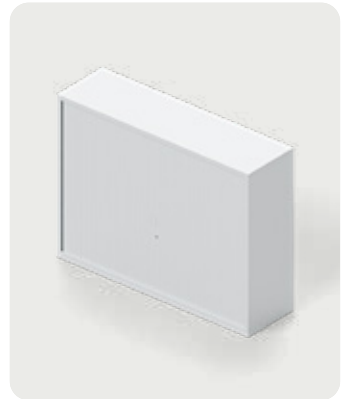
**Ultimet Storage - Tambour
Doors - 1200H x 1600W -
Core Powdercoat**



ULTC-TD-12H-16W-COR

Depth 450mm
Height 1200mm
Width 1600mm

**Ultimet Storage - Tambour
Doors - 1200H x 1600W -
Curated Powdercoat**



ULTC-TD-12H-16W-CUR

Depth 450mm
Height 1200mm
Width 1600mm



Finishes and materials

Powder Coating (5 colours, matching with our laminate range + B&W, same cost and lead time as B&W, No MoQ)

Workstation frames, table bases, lounge frames and chair bases can now all be finished to perfectly match fabrics, laminates, and acoustic panels for a more cohesive, tailored look.



Bluestone



Baye



Burnt Ochre



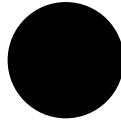
Eucalypt



Kalamata



White



Black



Care and maintenance

Our products are made to last and to do so they require regular care. Every material has its own best way to clean and maintain, and we're here to help you choose what works best for your space. If your project has unique requirements or a specific use case, our team can guide you through the right approach. We see care as part of the ongoing partnership, helping you keep your spaces performing well over time.

Laminate Surfaces

Clean with a damp, soft cloth or sponge using lukewarm water. Neutral diluted detergent may also be used with lukewarm water. Strong detergents which contain bleach, acid or have an abrasive effect (such as scouring creams) should be avoided.

Metal surfaces (except stainless steel)

Clean with a damp, soft cloth or sponge using lukewarm soapy water. Strong detergents which contain bleach, acid or have an abrasive effect (such as scouring creams) should be avoided. Sponges and scourers made from synthetic fibres or metal which may leave permanent scratches on the surfaces should also be avoided. Ensure product is dried with clean fibre-free cloth after washing.

Stainless steel

Stainless steel needs constant care and preventative maintenance. The surface needs to be wiped dry of moisture daily. This is to prevent the moisture being trapped under a cover of dust or sea spray which results in tea staining. Stainless steel should be cleaned with 'White Lily' cream cleaner (no abrasive) or a stainless-steel cleaner - usually in a spray can. Wipe over surface in direction of finish lines.

Plastic

These materials are fairly resistant to damage from dirt. Regular dusting should help keep the surfaces free from dirt and help stop any scratches occurring. Avoid contact with boiling water, high heat, flame, and abrasives. Wash in warm soapy water and apply pressure where necessary, drying afterwards with a clean cloth. Do not use strong or abrasive cleaning fluids or detergents, as these may affect the colour and finish of the surface.

Fabric

For a general clean, regular dusting and vacuuming removes any loose particles and stops dirt from entering the weave and breaking down the fibres. When necessary, the upholstery should be gently wiped with a clean cloth, dampened with warm soapy water. Immediately dry with a clean and dry non-abrasive cloth. Do not use strong or abrasive cleaning fluids or detergents, as these may affect the colour and finish of the fabric. Upholstery can be professionally dry-cleaned if required. For best care and maintenance results please follow manufacturer's instructions.

Leather

Periodically dust with a clean, dry soft cloth. Do not expose your furniture to prolonged sunlight or other heat sources as this may cause fading. Avoid extremes of humidity. For dried soiling: gently brush with a soft brush or gently clean with a vacuum cleaner. For wet soiling and deep cleaning: gently remove the excess substance from the surface with absorbent paper. With a clean cloth soaked in a mild soap solution, gently remove the stain. Do not soak the surface, dry and buff immediately with a clean cloth. For best care and maintenance results please follow manufacturer's instructions.

Vinyl, PU & Faux Leather

Periodically dust with a clean, dry soft cloth. Do not expose your furniture to prolonged sunlight or other heat sources as this may cause fading. Avoid extremes of humidity. For dried soiling: gently brush with a soft brush or gently clean with a vacuum cleaner. For wet soiling and deep cleaning: gently remove the excess substance from the surface with absorbent paper. With a clean cloth soaked in a mild soap solution, gently remove the stain. Do not soak the surface, dry and buff immediately with a clean cloth. For best care and maintenance results please follow manufacturer's instructions.



Real People. Speed. Precision. Scale.

We make commercial furniture in Australia for workplaces and public spaces.

Since 1981, we've designed and manufactured locally, working directly with clients and project teams to deliver solutions that fit the space, the brief and the budget. Built to perform every day, and built to last.

burgtec

ACT

Canberra
Suite 2, Ground Floor, 15 Moore St,
Canberra ACT 2601

canberra@burgtec.com
02 4329 8102

NSW

Sydney
Level 1, 36 Carrington St,
Sydney NSW 2000

sydney@burgtec.com
02 4329 8101

QLD

Brisbane
Level 12, 300 Queen St,
Brisbane QLD

brisbane@burgtec.com
07 3507 1129