

burgtec

Archer Collection

Design that works



Archer Collection

Design that works

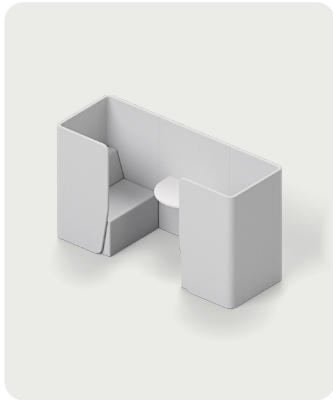
Collaborative spaces are inspiring, but employees and students also need privacy – Archer provide both. With slimline upholstered wall panels that follow versatile and aesthetic figurations, this time-tested range deliver sheltered zones amongst open-plan environments to accommodate the working styles.

Designer	Burgtec
Features	Made in Australia A range of both individual and collaborative units Endless configuration options Fully upholstered wall panels Simple, streamlined design for small footprint Easy assembly and installation The sustainable, adaptable and cost-effective alternative to permanent walls
Finishes	Upholstery: Select from the house fabrics range or fabric of your choice Worktops: Select from the house laminates range (Contrast edging available) Powdercoat: Black or White
Warranty	5 Years
Lead time	6-8 weeks
Origin	Australia



Archer Booths

Variants and dimensions



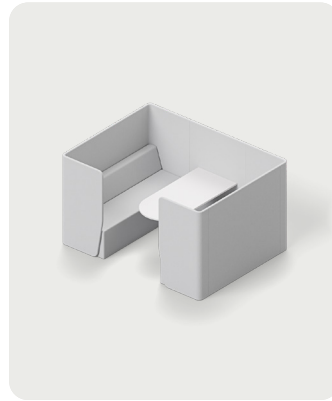
ACHM-2P-CUR-TSTL

Depth	1200mm
Height	1400mm
Width	2500mm
Seat Depth	480mm
Seat Height	450mm
Seat Width	680mm
Worktop Height	720mm
Worktop Width	700mm



ACHM-4P-CUR-TSTL

Depth	1500mm
Height	1400mm
Width	2500mm
Seat Depth	480mm
Seat Height	450mm
Seat Width	680mm
Worktop Height	720mm
Worktop Width	700mm

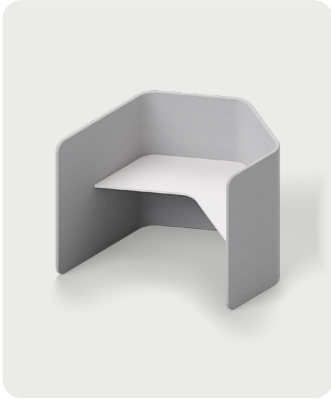


ACHM-6P-CUR-TSTL

Depth	2100mm
Height	1400mm
Width	2500mm
Seat Depth	480mm
Seat Height	450mm
Seat Width	680mm
Worktop Height	720mm
Worktop Width	700mm

Archer Hex

Variants and dimensions



ACHH-LH-CUR-TSTL

Depth 1700mm
Height 1400mm
Width 1630mm
Worktop Height 720mm

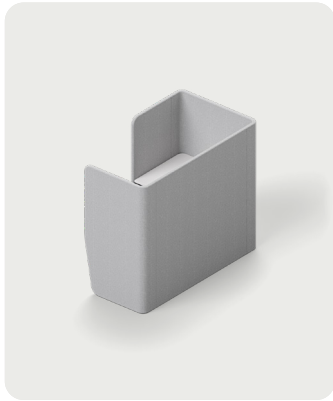


ACHH-RH-CUR-TSTL

Depth 1700mm
Height 1400mm
Width 1630mm
Worktop Height 720mm

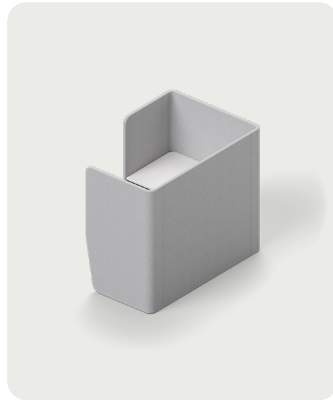
Archer Meeting

Variants and dimensions



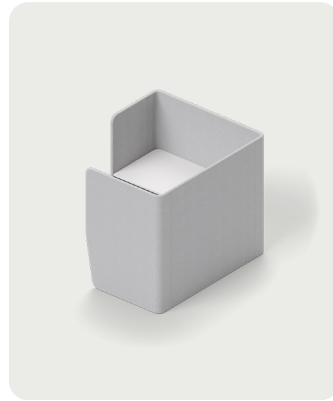
ACHW-BT-10W-CUR-TSTL

Depth 1320mm
Height 1400mm
Width 1000mm
Worktop Height 720mm



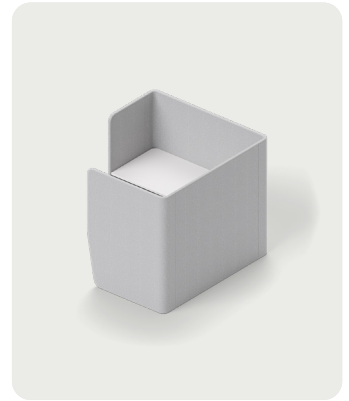
ACHW-BT-12W-CUR-TSTL

Depth 1320mm
Height 1400mm
Width 1200mm
Worktop Height 720mm



ACHW-BT-15W-CUR-TSTL

Depth 1320mm
Height 1400mm
Width 1500mm
Worktop Height 720mm

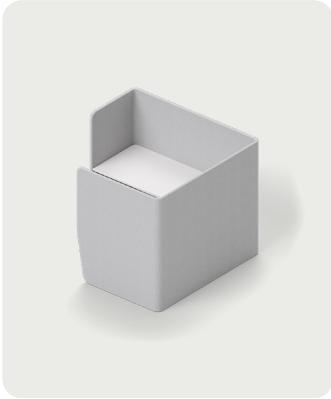


ACHW-BT-16W-CUR-TSTL

Depth 1320mm
Height 1400mm
Width 1600mm
Worktop Height 720mm

Archer Work

Variants and dimensions



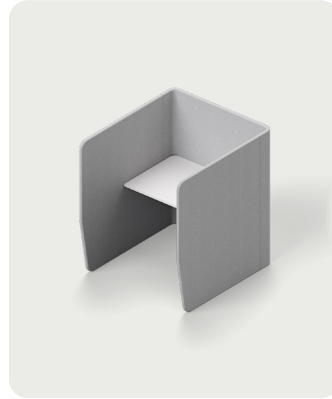
ACHW-BT-18W-CUR-TSTL

Depth 1320mm
Height 1400mm
Width 1800mm
Worktop Height 720mm



ACHW-CL-10W-CUR-TSTL

Depth 1320mm
Height 1400mm
Width 1000mm
Worktop Height 720mm



ACHW-CL-12W-CUR-TSTL

Depth 1320mm
Height 1400mm
Width 1200mm
Worktop Height 720mm

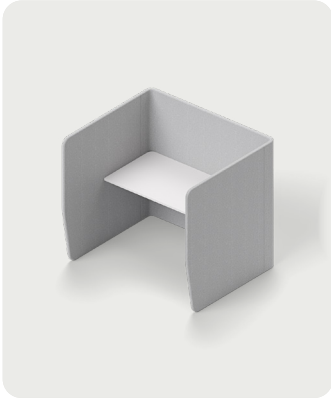


ACHW-CL-15W-CUR-TSTL

Depth 1320mm
Height 1400mm
Width 1500mm
Worktop Height 720mm

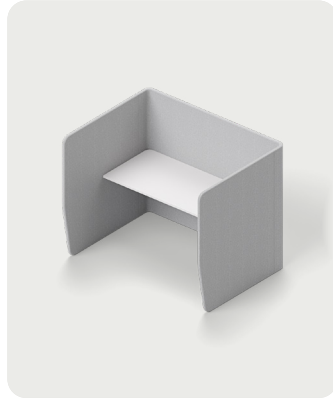
Archer Work

Variants and dimensions



ACHW-CL-16W-CUR-TSTL

Depth 1320mm
Height 1400mm
Width 1600mm
Worktop Height 720mm



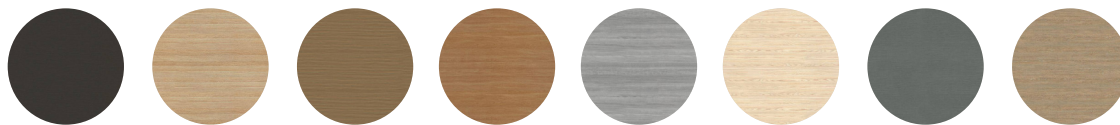
ACHW-CL-18W-CUR-TSTL

Depth 1320mm
Height 1400mm
Width 1800mm
Worktop Height 720mm

Finishes and materials

Laminate, featured selection (28 Colours, with 5 matching our powder coating range, 3600x1800)

A versatile commercial surface, ideal for clean, consistent finishes across our workstations, tables and storage units. Built around popular Laminex decors, with options like Structural MR MDF for added impact resistance and Protec+ for extra hygiene.



Black Birchply Classic Oak Danish Walnut Elegant Oak Fox Teakwood Milkwood New Graphite Rural Oak



Select Beech Young Beech White

Care and maintenance

Our products are made to last and to do so they require regular care. Every material has its own best way to clean and maintain, and we're here to help you choose what works best for your space. If your project has unique requirements or a specific use case, our team can guide you through the right approach. We see care as part of the ongoing partnership, helping you keep your spaces performing well over time.

Laminate Surfaces

Clean with a damp, soft cloth or sponge using lukewarm water. Neutral diluted detergent may also be used with lukewarm water. Strong detergents which contain bleach, acid or have an abrasive effect (such as scouring creams) should be avoided.

Metal surfaces (except stainless steel)

Clean with a damp, soft cloth or sponge using lukewarm soapy water. Strong detergents which contain bleach, acid or have an abrasive effect (such as scouring creams) should be avoided. Sponges and scourers made from synthetic fibres or metal which may leave permanent scratches on the surfaces should also be avoided. Ensure product is dried with clean fibre-free cloth after washing.

Stainless steel

Stainless steel needs constant care and preventative maintenance. The surface needs to be wiped dry of moisture daily. This is to prevent the moisture being trapped under a cover of dust or sea spray which results in tea staining. Stainless steel should be cleaned with 'White Lily' cream cleaner (no abrasive) or a stainless-steel cleaner - usually in a spray can. Wipe over surface in direction of finish lines.

Plastic

These materials are fairly resistant to damage from dirt. Regular dusting should help keep the surfaces free from dirt and help stop any scratches occurring. Avoid contact with boiling water, high heat, flame, and abrasives. Wash in warm soapy water and apply pressure where necessary, drying afterwards with a clean cloth. Do not use strong or abrasive cleaning fluids or detergents, as these may affect the colour and finish of the surface.

Fabric

For a general clean, regular dusting and vacuuming removes any loose particles and stops dirt from entering the weave and breaking down the fibres. When necessary, the upholstery should be gently wiped with a clean cloth, dampened with warm soapy water. Immediately dry with a clean and dry non-abrasive cloth. Do not use strong or abrasive cleaning fluids or detergents, as these may affect the colour and finish of the fabric. Upholstery can be professionally dry-cleaned if required. For best care and maintenance results please follow manufacturer's instructions.

Leather

Periodically dust with a clean, dry soft cloth. Do not expose your furniture to prolonged sunlight or other heat sources as this may cause fading. Avoid extremes of humidity. For dried soiling: gently brush with a soft brush or gently clean with a vacuum cleaner. For wet soiling and deep cleaning: gently remove the excess substance from the surface with absorbent paper. With a clean cloth soaked in a mild soap solution, gently remove the stain. Do not soak the surface, dry and buff immediately with a clean cloth. For best care and maintenance results please follow manufacturer's instructions.

Vinyl, PU & Faux Leather

Periodically dust with a clean, dry soft cloth. Do not expose your furniture to prolonged sunlight or other heat sources as this may cause fading. Avoid extremes of humidity. For dried soiling: gently brush with a soft brush or gently clean with a vacuum cleaner. For wet soiling and deep cleaning: gently remove the excess substance from the surface with absorbent paper. With a clean cloth soaked in a mild soap solution, gently remove the stain. Do not soak the surface, dry and buff immediately with a clean cloth. For best care and maintenance results please follow manufacturer's instructions.



Real People. Speed. Precision. Scale.

We make commercial furniture in Australia for workplaces and public spaces.

Since 1981, we've designed and manufactured locally, working directly with clients and project teams to deliver solutions that fit the space, the brief and the budget. Built to perform every day, and built to last.

burgtec

ACT

Canberra
Suite 2, Ground Floor, 15 Moore St,
Canberra ACT 2601

canberra@burgtec.com
02 4329 8102

NSW

Sydney
Level 1, 36 Carrington St,
Sydney NSW 2000

sydney@burgtec.com
02 4329 8101

QLD

Brisbane
Level 12, 300 Queen St,
Brisbane QLD

brisbane@burgtec.com
07 3507 1129